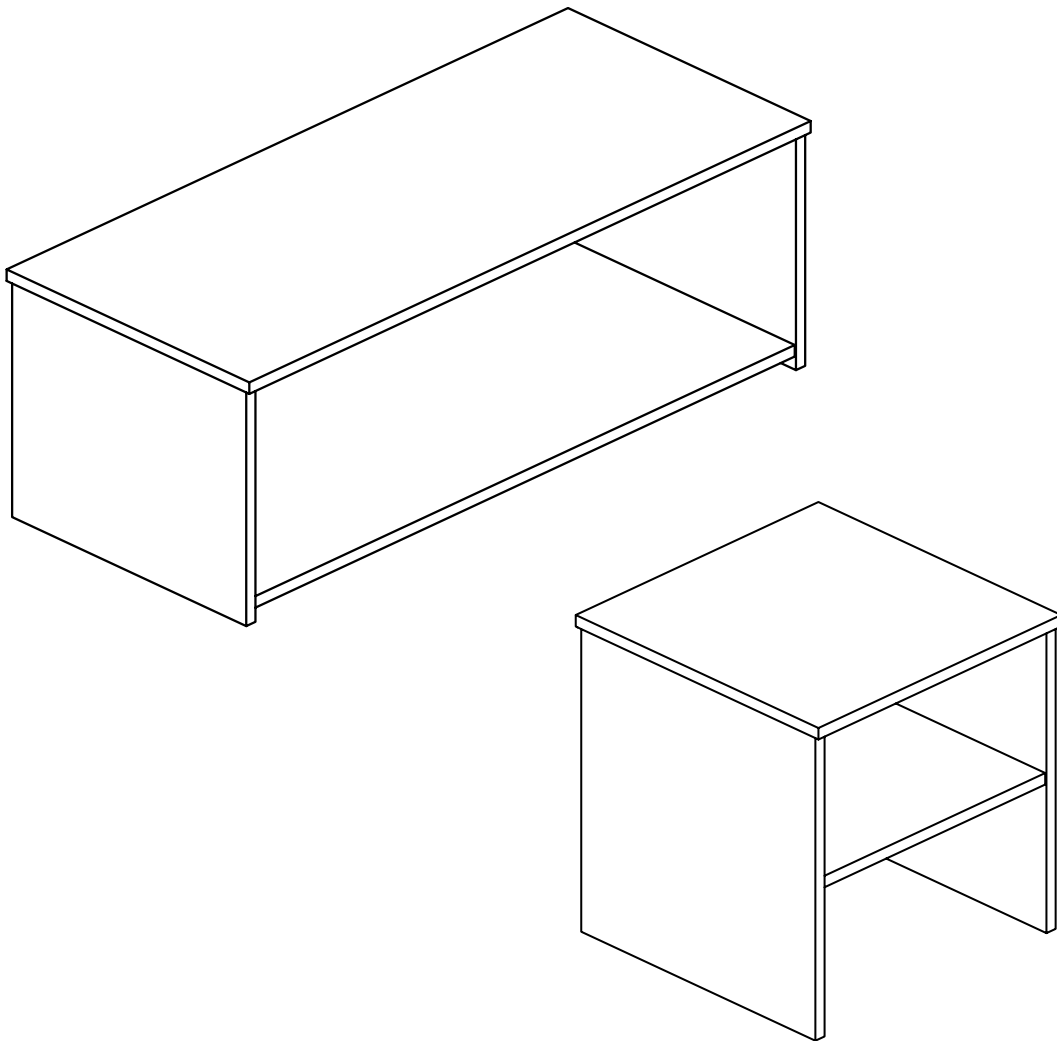


NEWLYN

Coffee Table & Lamp Table



IMPORTANT - Retain these instructions for future reference


Safety

Important - Please read these instructions fully before starting assembly

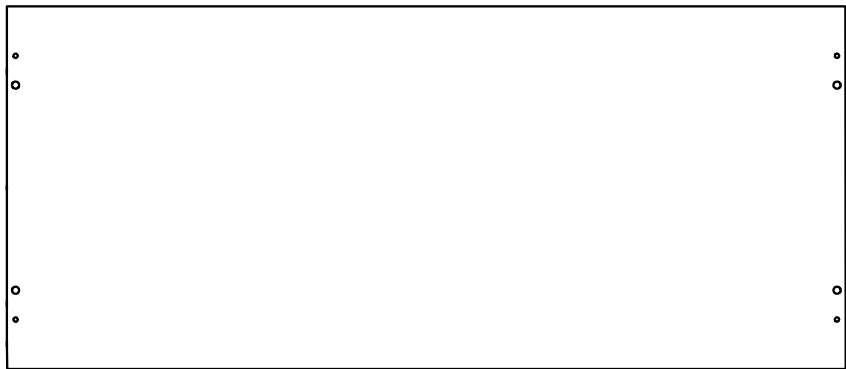
- Warning: The coffee table weighs approximately 12 kgs and the lamp table weighs approximately 7kgs. Please lift with care.
- Assembly to be carried out by a competent adult only.
- During assembly children should be kept away from the product due to possible risk of injury.
- Installation shall only be carried out exactly according to the manufacturer's instructions - otherwise a safety risk can occur if incorrectly installed.
- Do not use this item if any components are missing or damaged.
- Regularly check all fastenings to ensure they are properly tightened.

- **WARNING:** To prevent possible overbalancing units must be secured to a wall.
- A unit that is allowed to topple can cause serious or fatal injury. In addition to wall fixing the unit, place heavy items on the lower shelves, do not put any heavy objects on top of the unit and never allow children to climb or hang on drawers, doors or shelves.

Care Advice

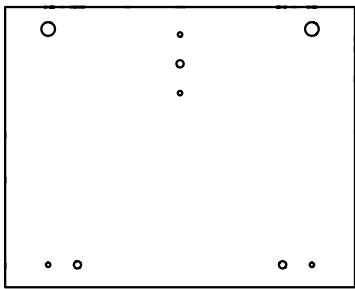
- Check you have all the components and tools listed on relevant pages.
- Remove all fittings from the specified plastic bag and separate them into their groups.
- Parts of the assembly will be easier with 2 people.
- Make sure you have enough space to layout the parts before starting.
- Do not stand or put weight on the product, this could cause damage.
- Assemble the item as close to its final position (in the same room) as possible.
- Assemble on a soft level surface to avoid damaging the unit or your floor (use opened out unit carton).
- 
- We do not recommend the use of power drill/drivers for inserting screws, as this could damage the unit. Only use hand screwdrivers.
- Dispose of all packaging carefully and responsibly.
- Only clean with a damp cloth.

Coffee Table Panels



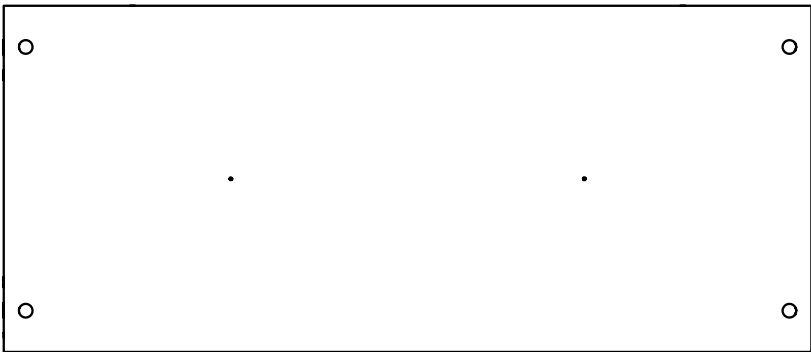
DF-00026207

1 91.6 x 39.6cm



DF-00026208

4 30.6 x 38.2cm **x 2**



DF-00026209

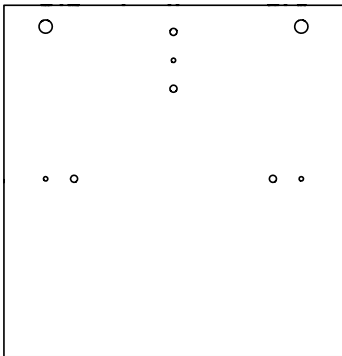
2 88.2 x 37.8cm



DF-00026210

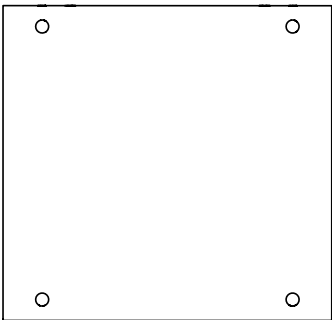
3 88.2 x 13.5cm

Lamp Table Panels



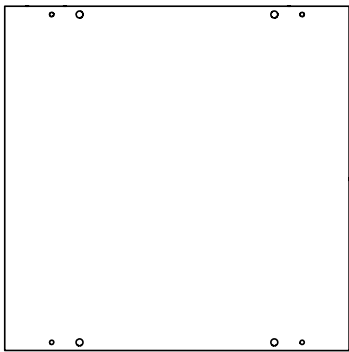
DF-00026199

5 39.6 x 38.2cm **x 2**



DF-00026200

6 36.2 x 37.8cm



DF-00026198

7 39.6 x 39.6cm



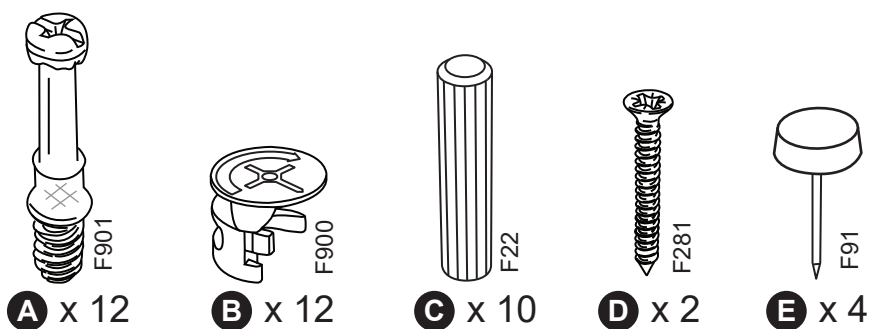
DF-00026201

8 36.2 X 13.5cm

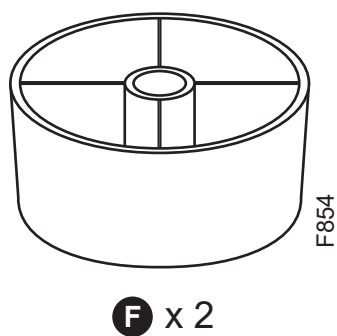
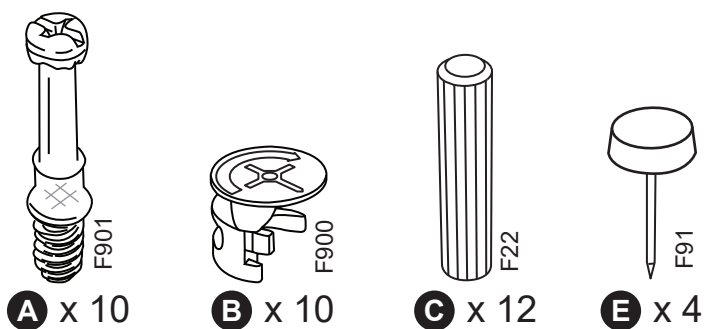
Fittings

Use these drawings to
correctly identify the fittings

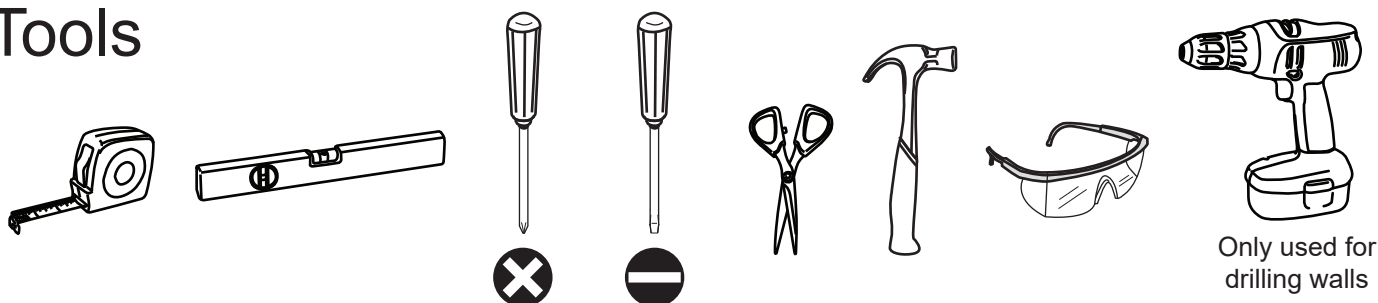
AGFW012



AGFW011

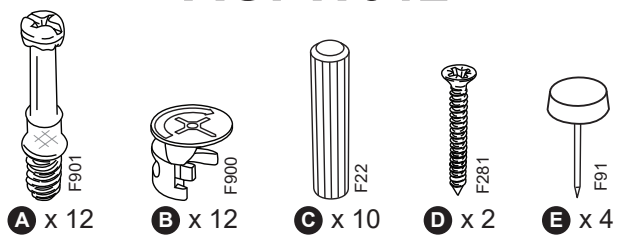


Tools

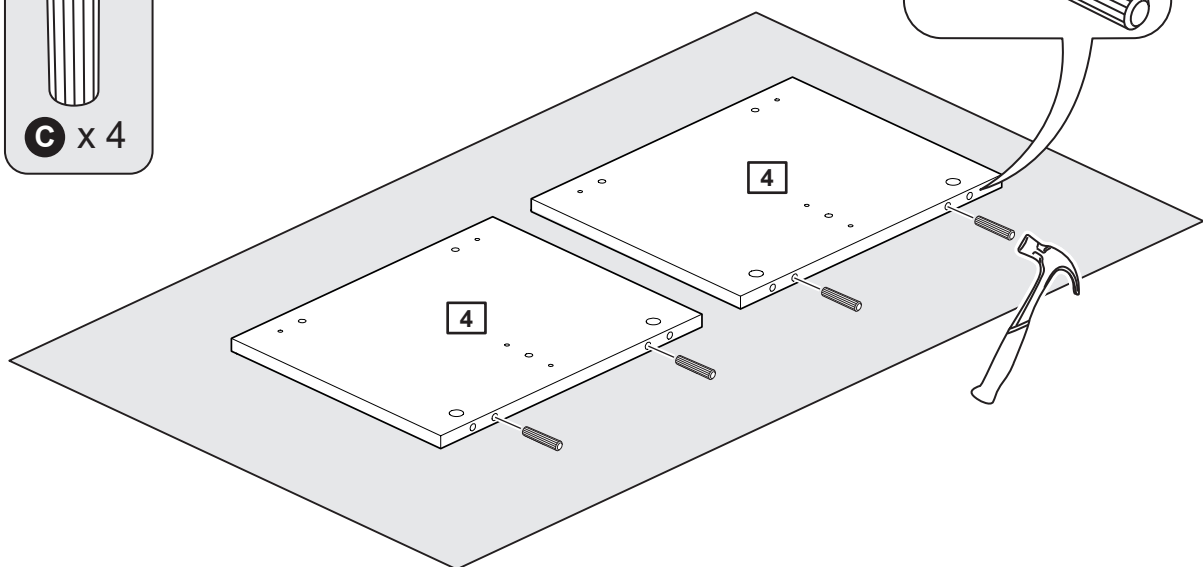
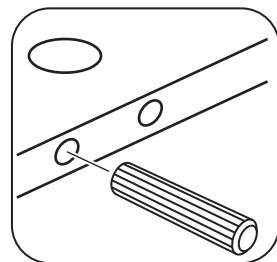
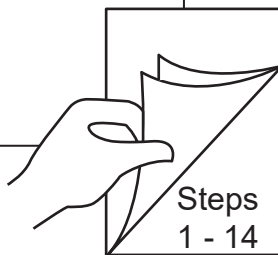
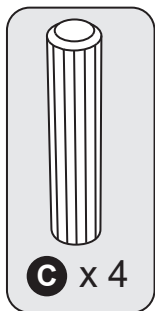


Coffee Table

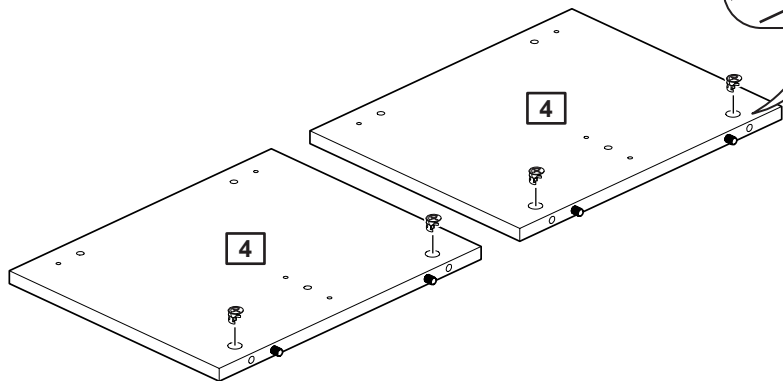
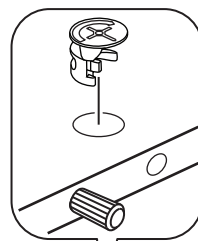
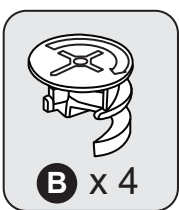
AGFW012



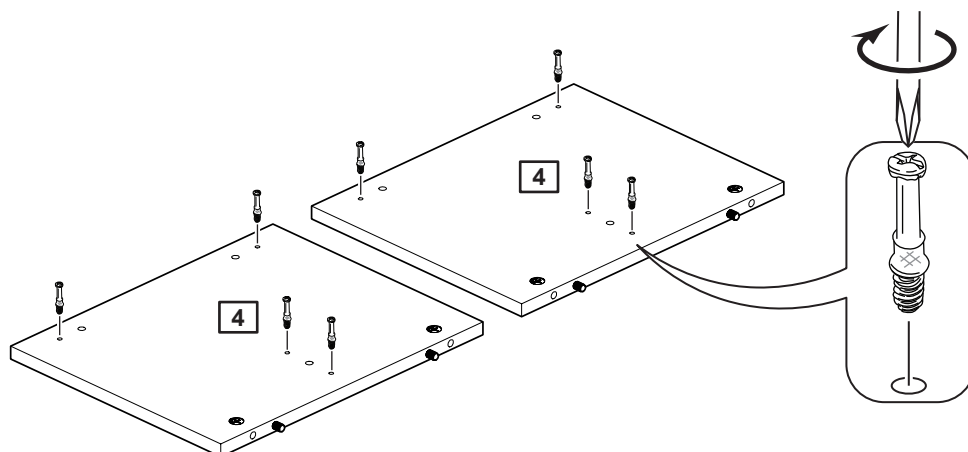
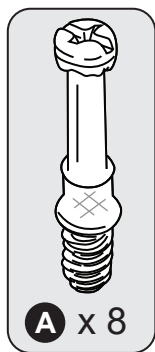
1



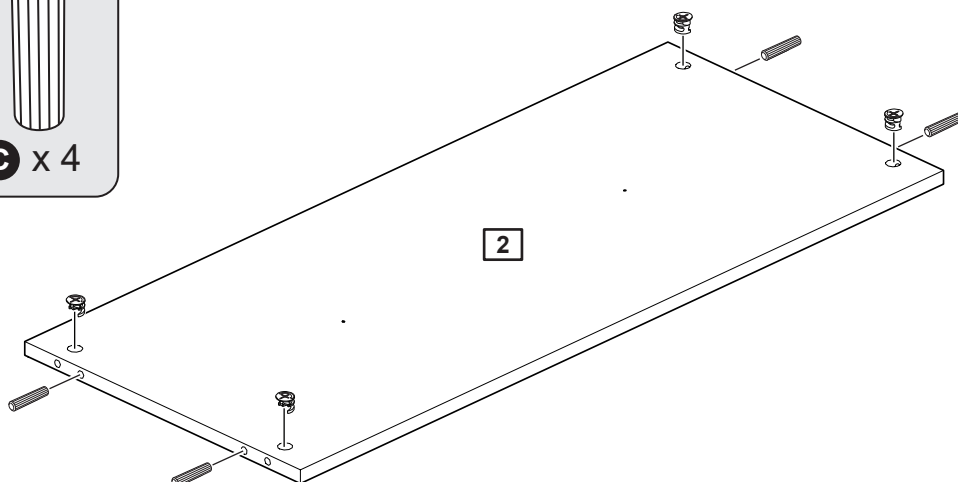
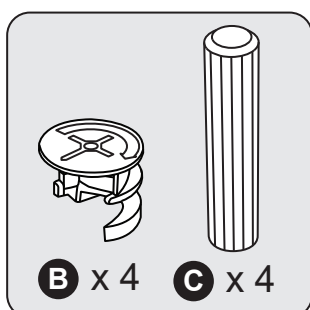
2



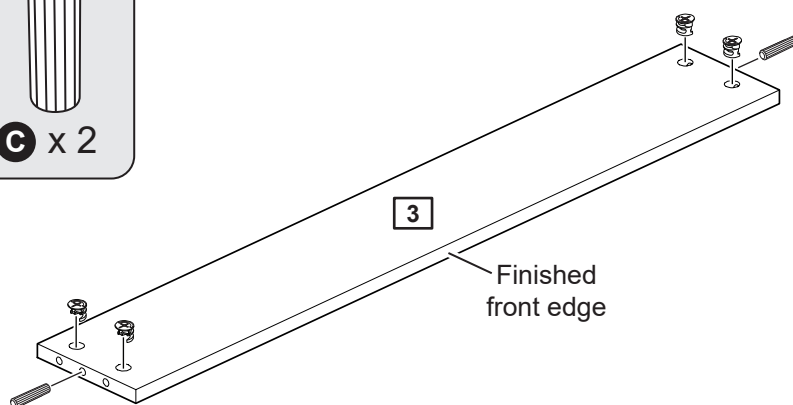
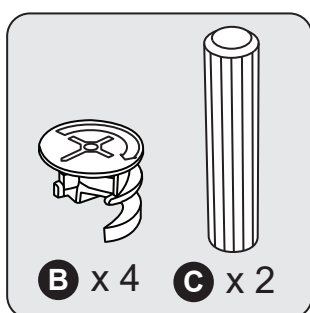
3



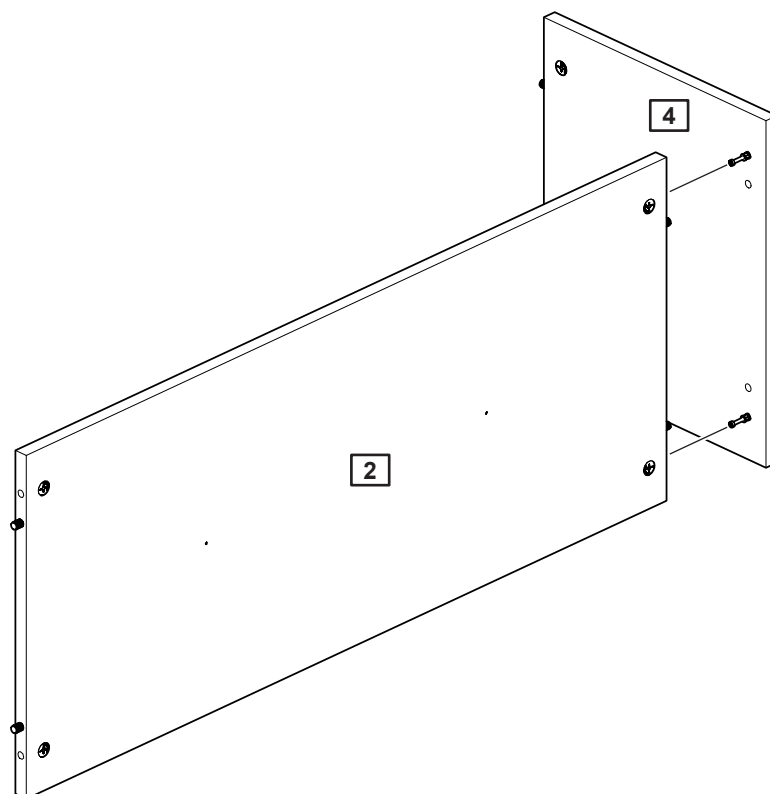
4



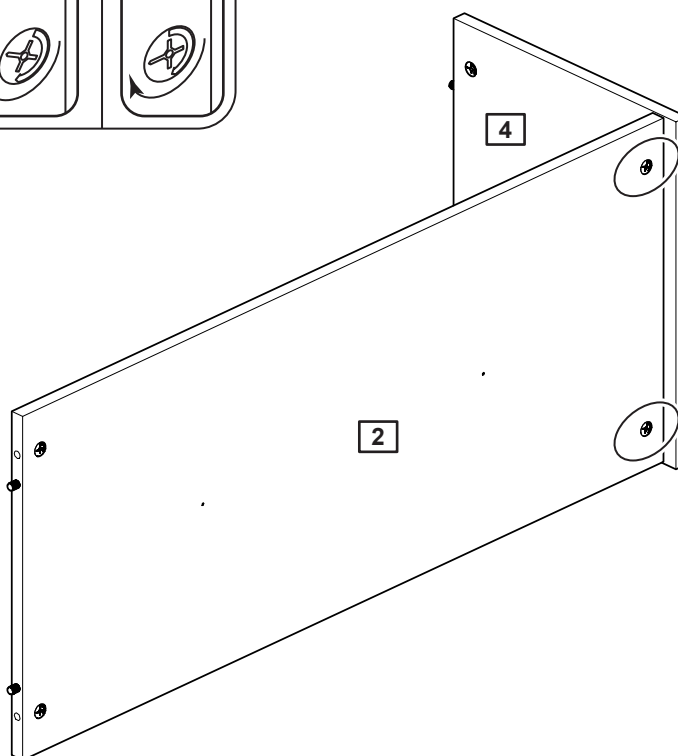
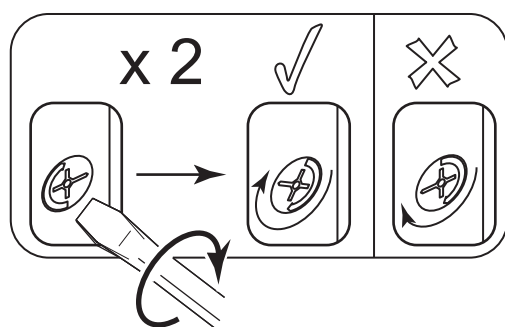
5



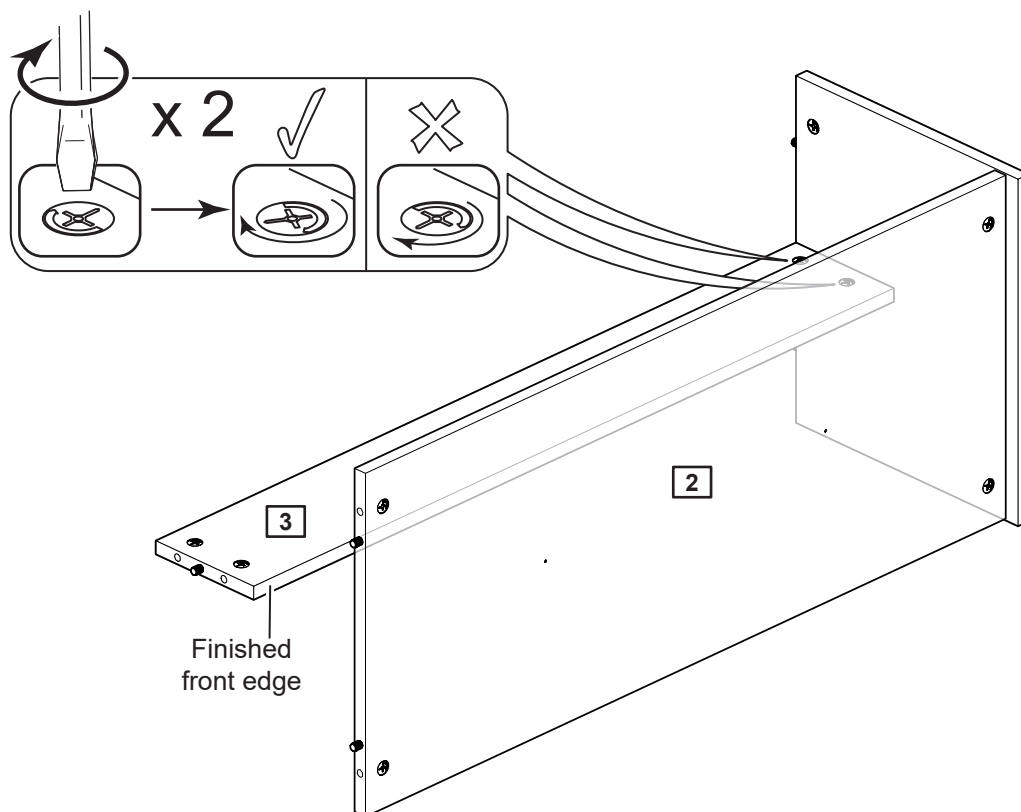
6



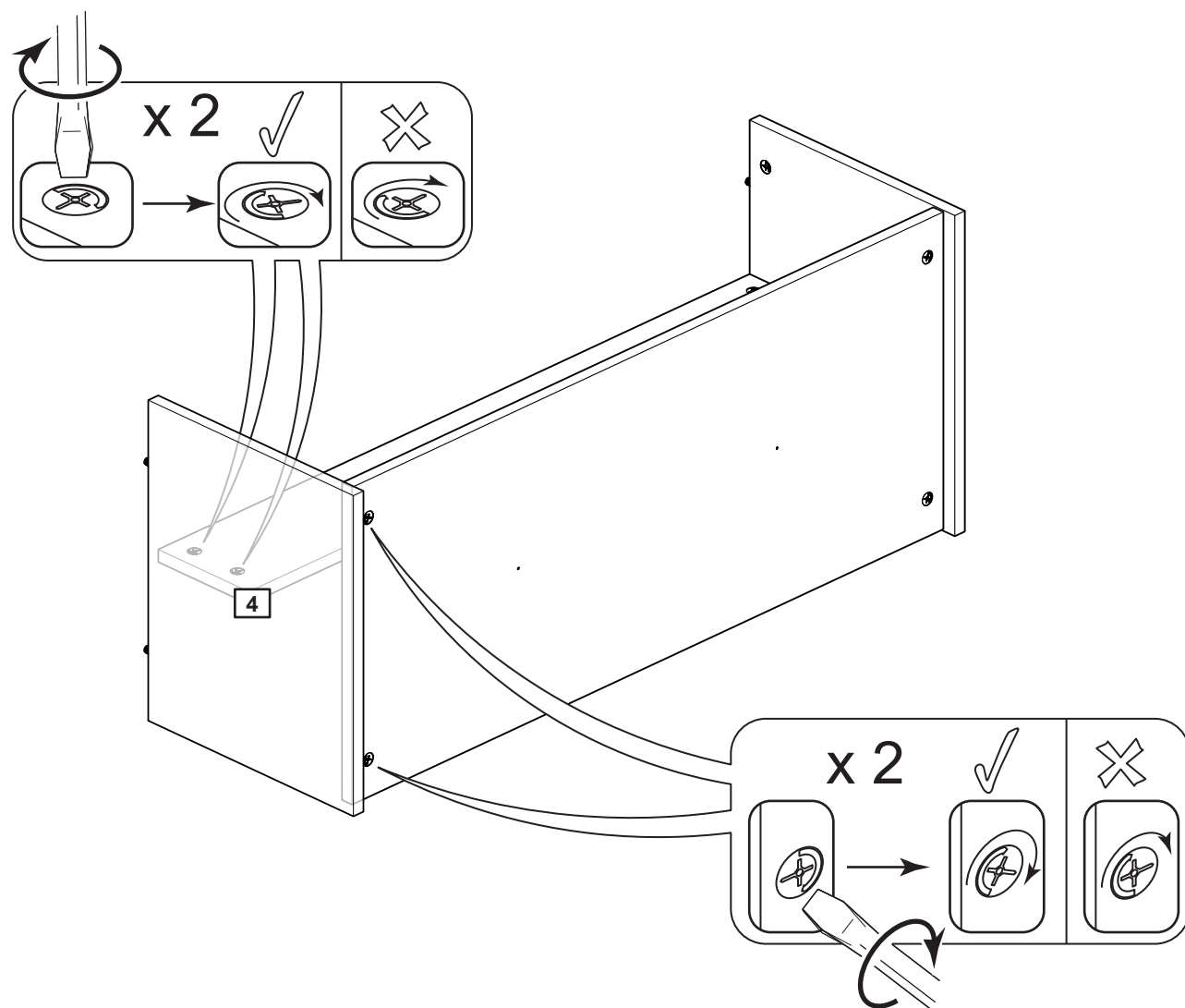
7



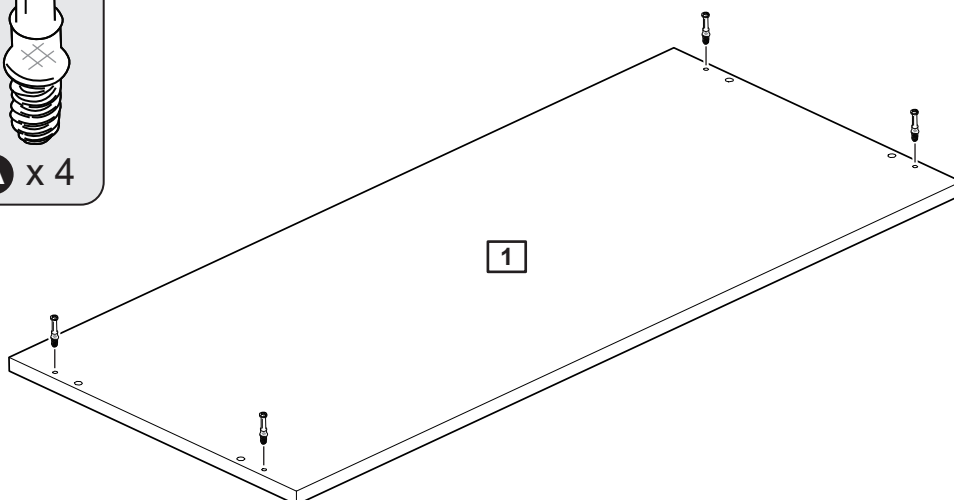
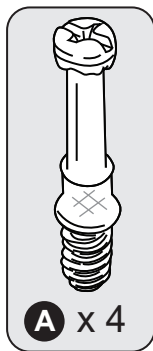
8



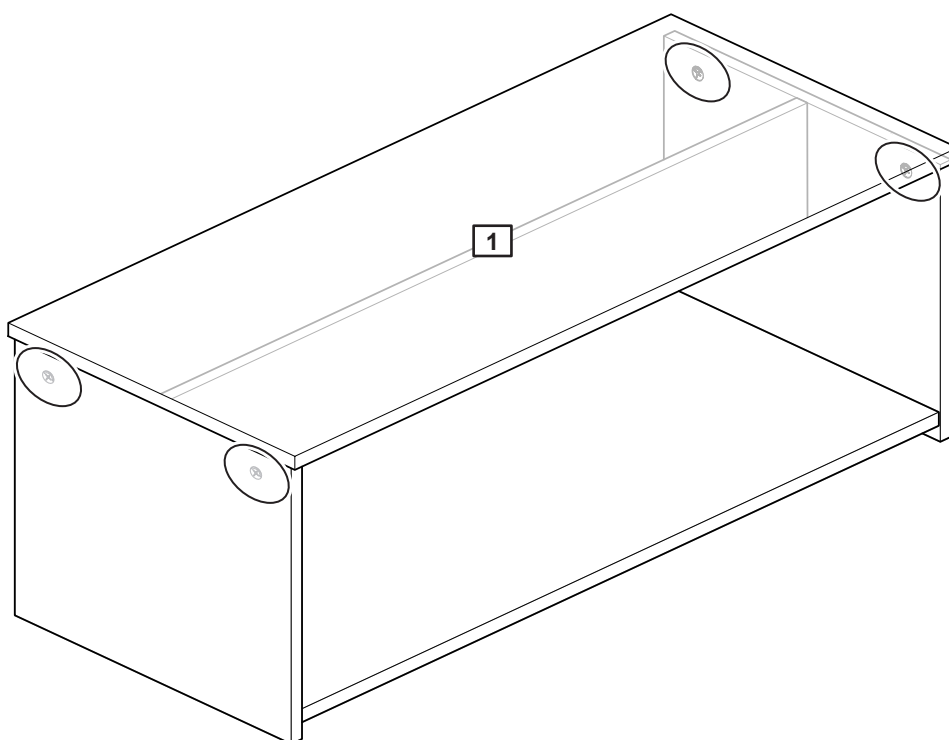
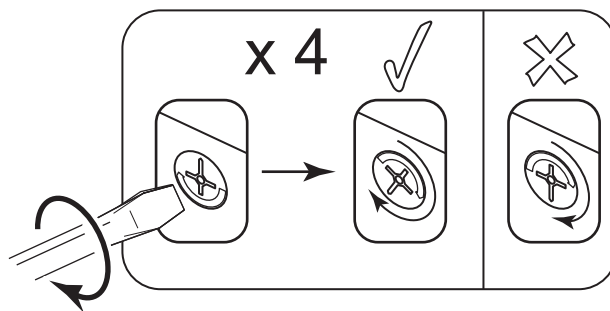
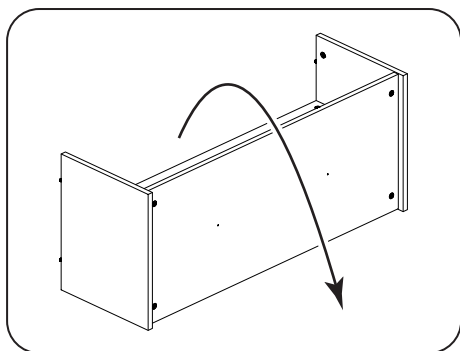
9



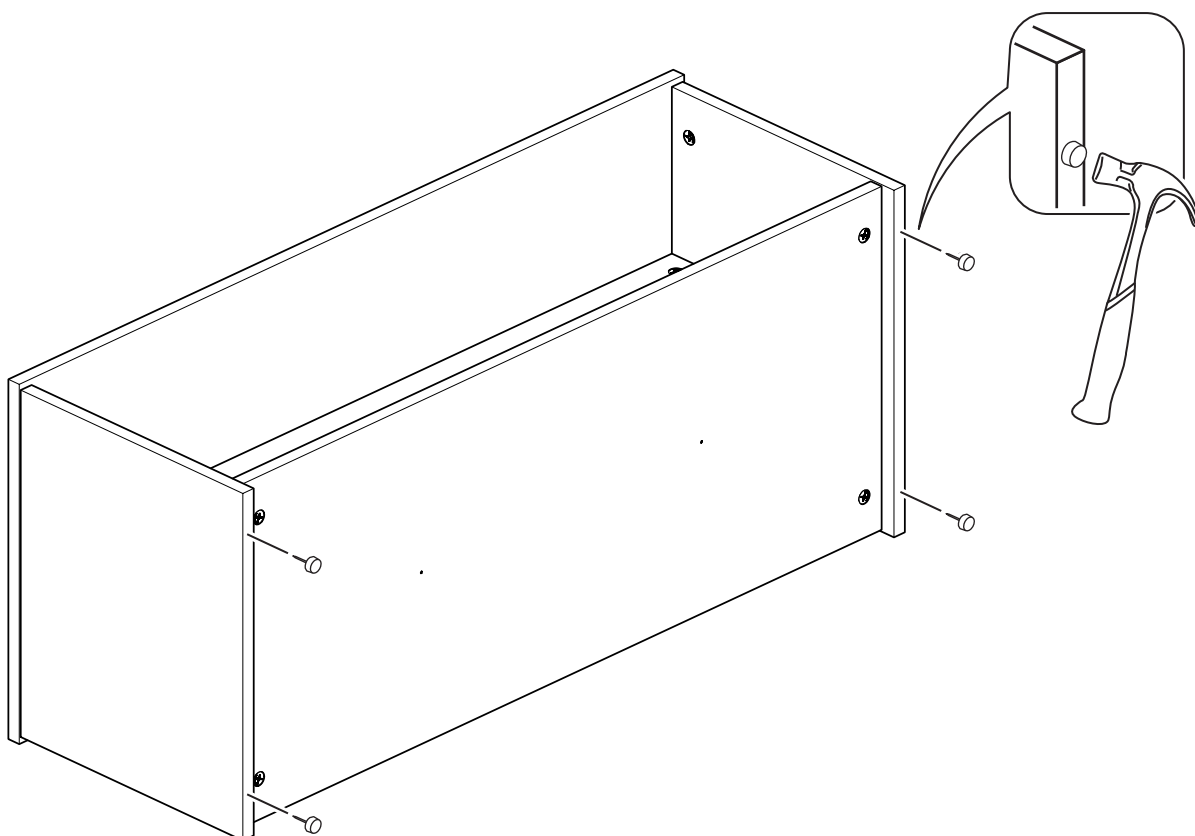
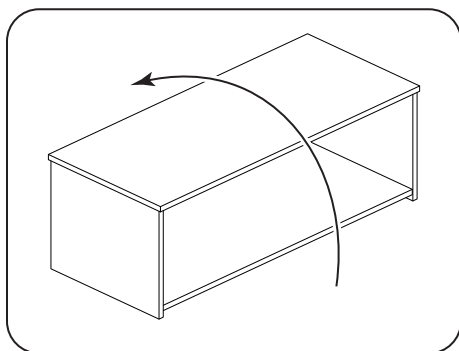
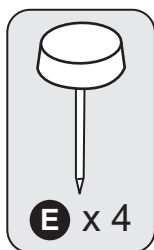
10



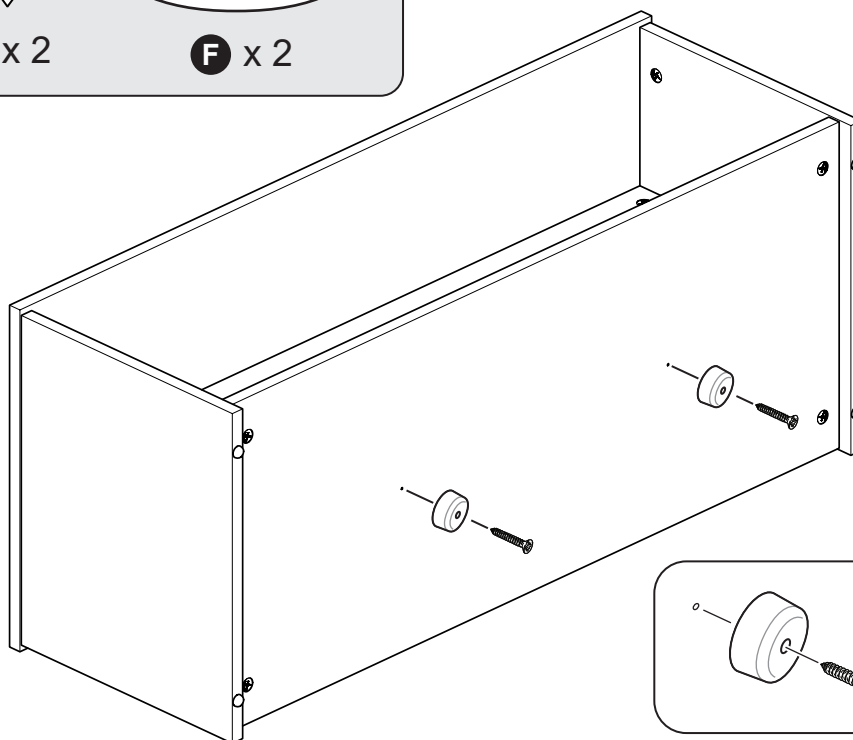
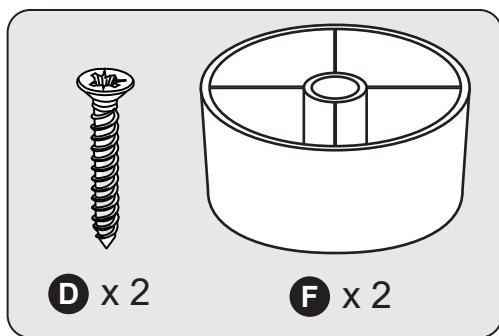
11



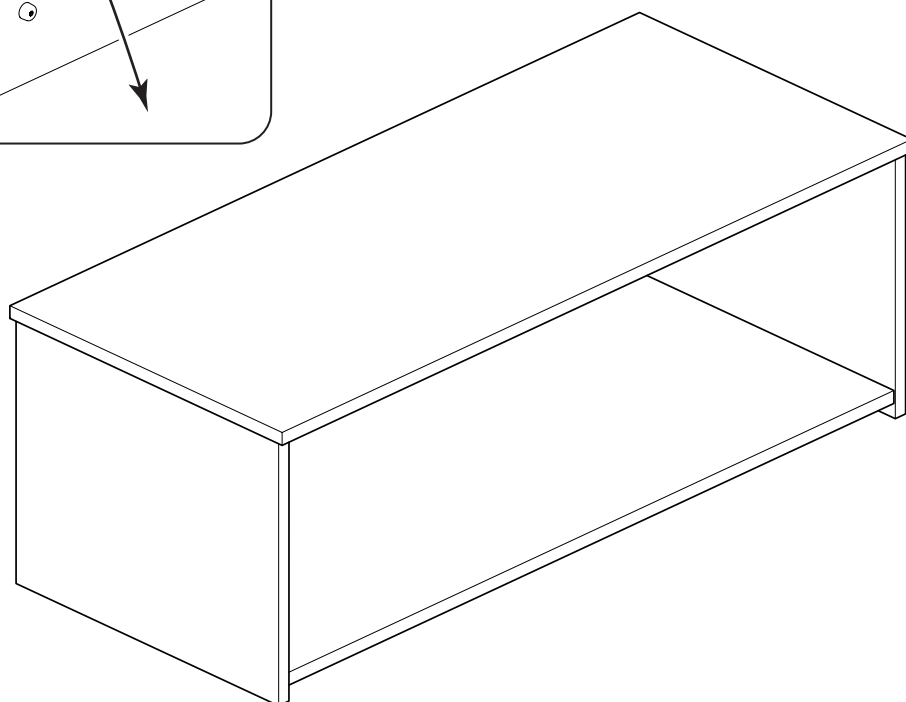
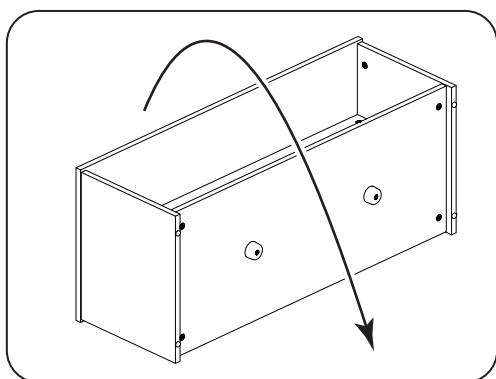
12



13

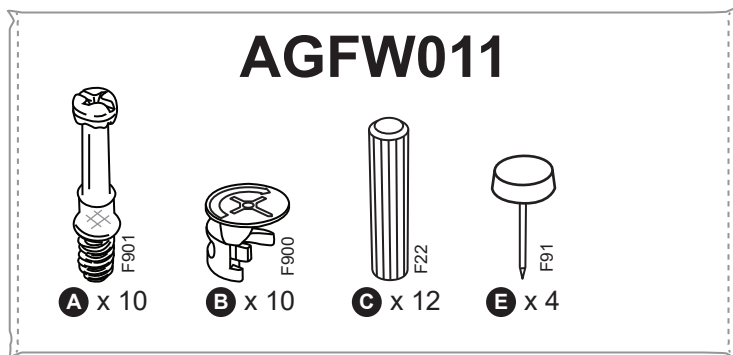
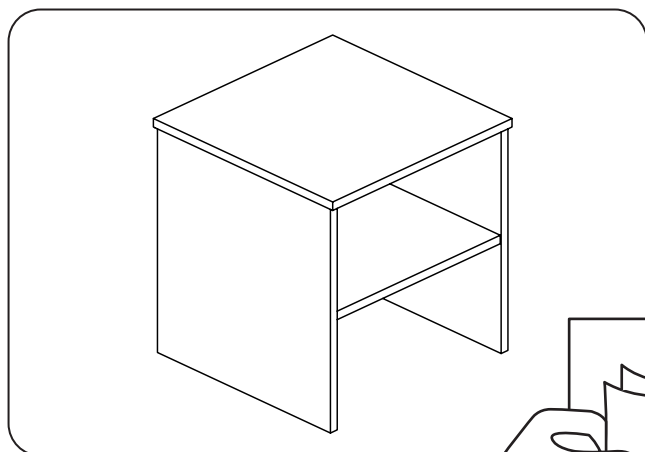


14

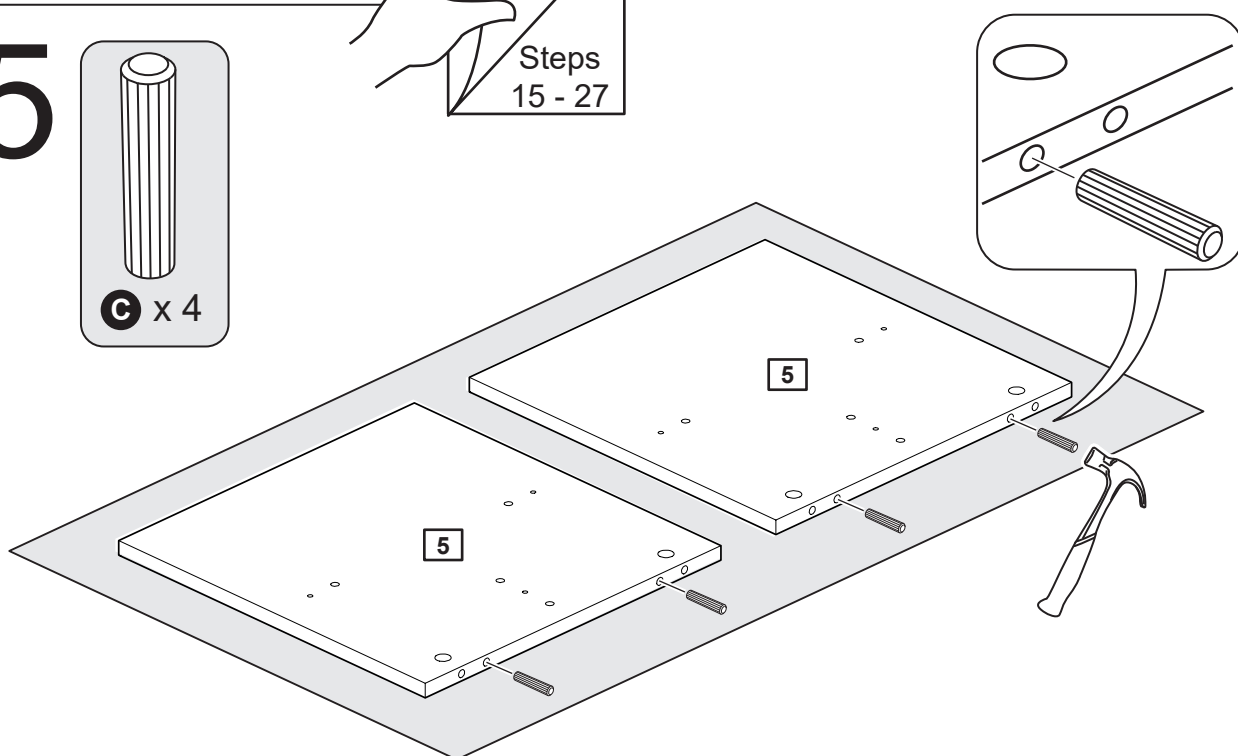
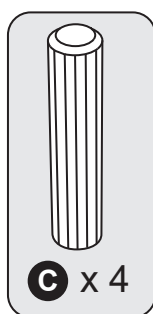


Assembly is complete

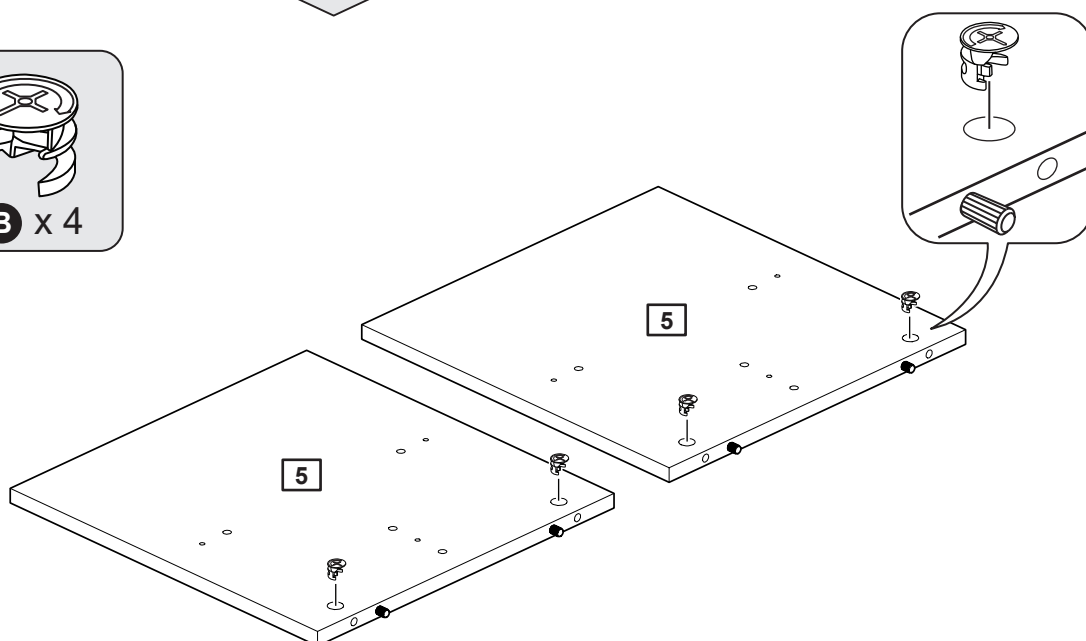
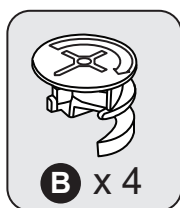
LampTable



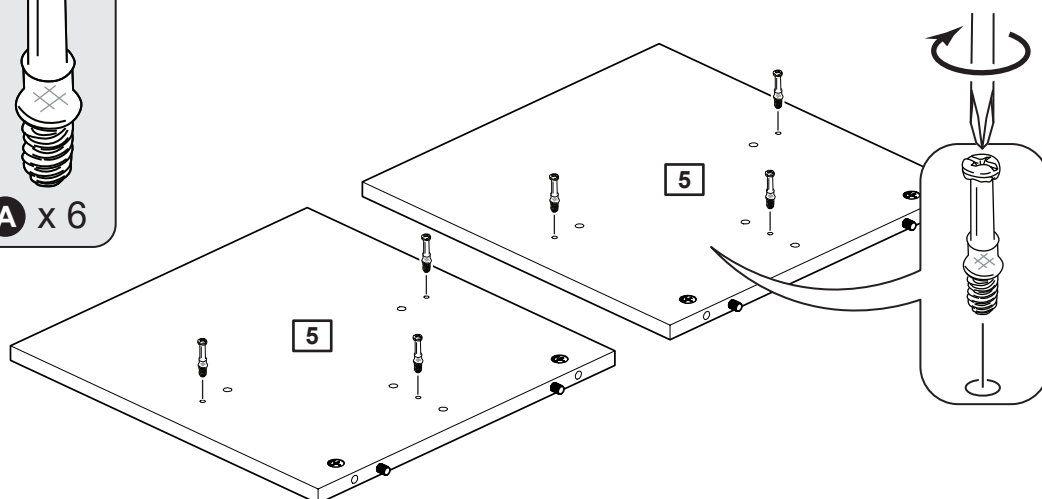
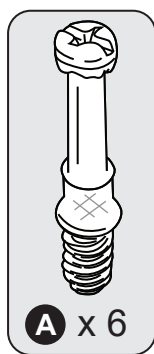
15



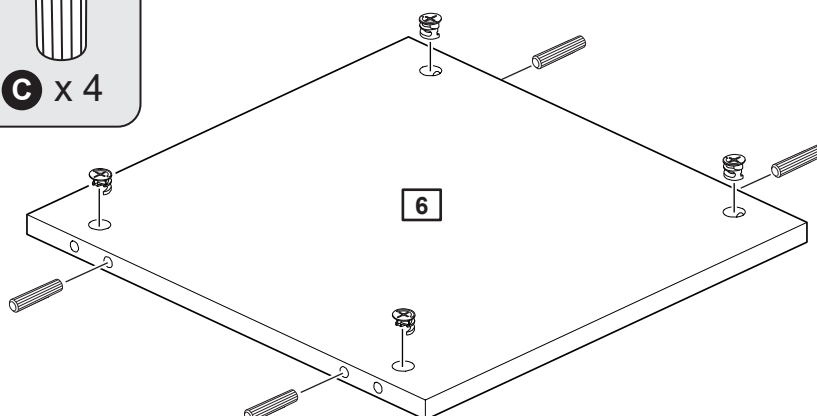
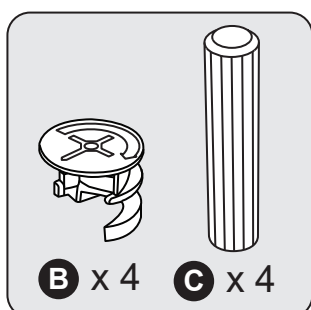
16



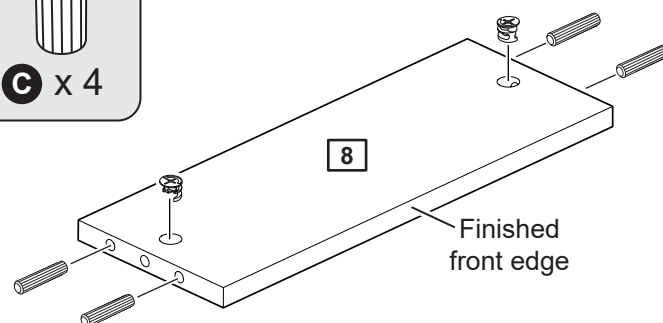
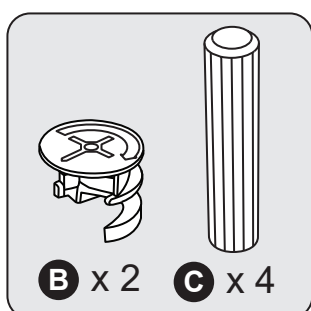
17



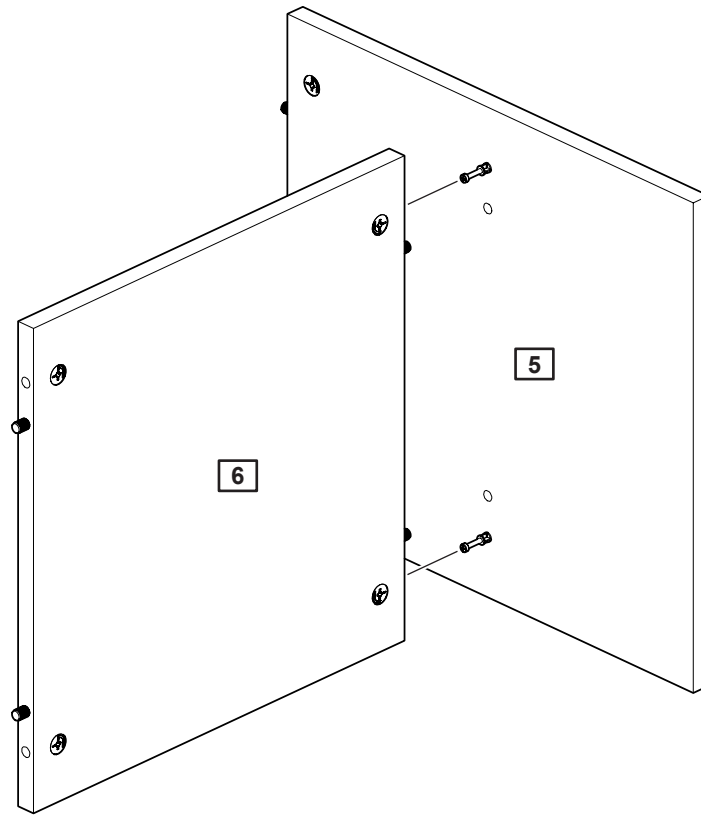
18



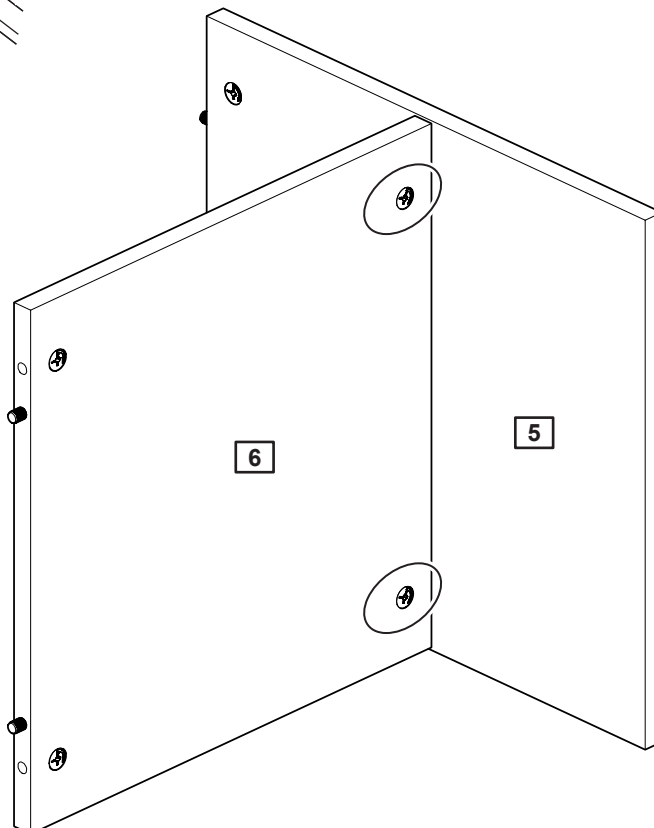
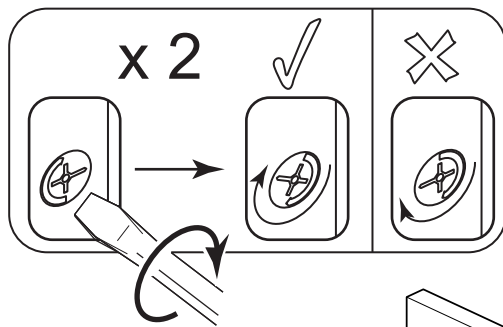
19



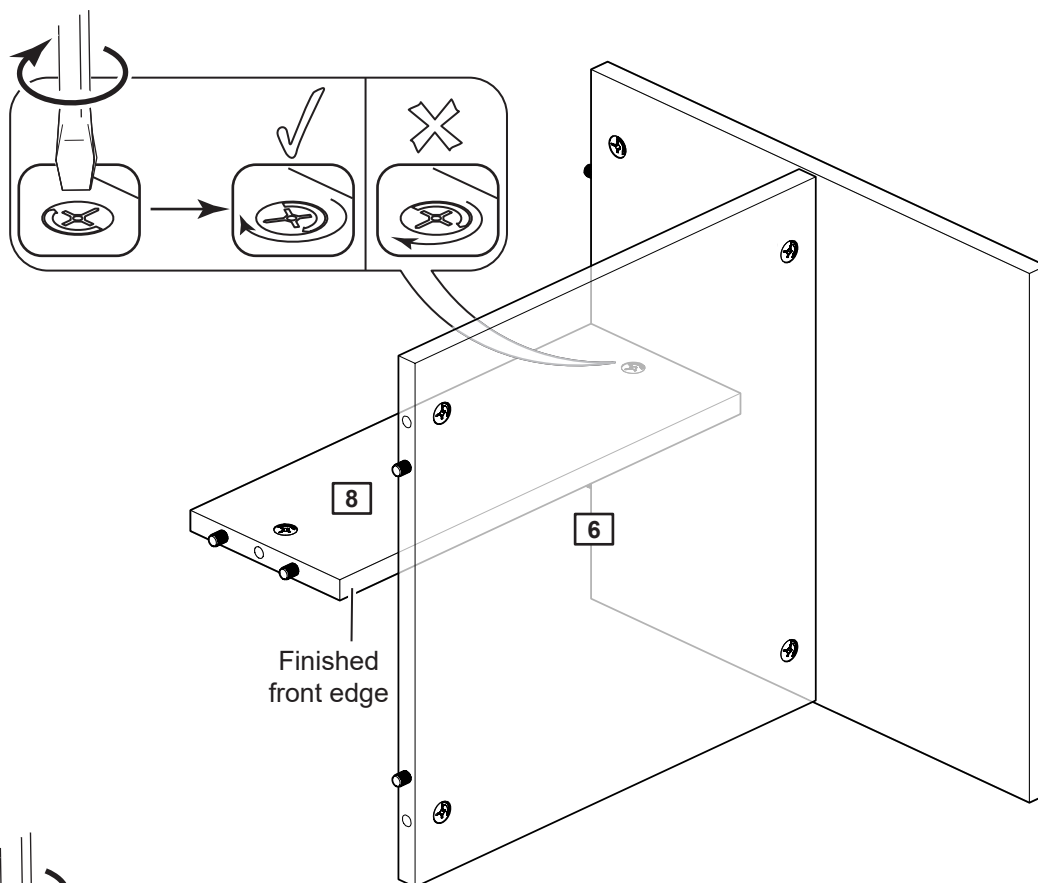
20



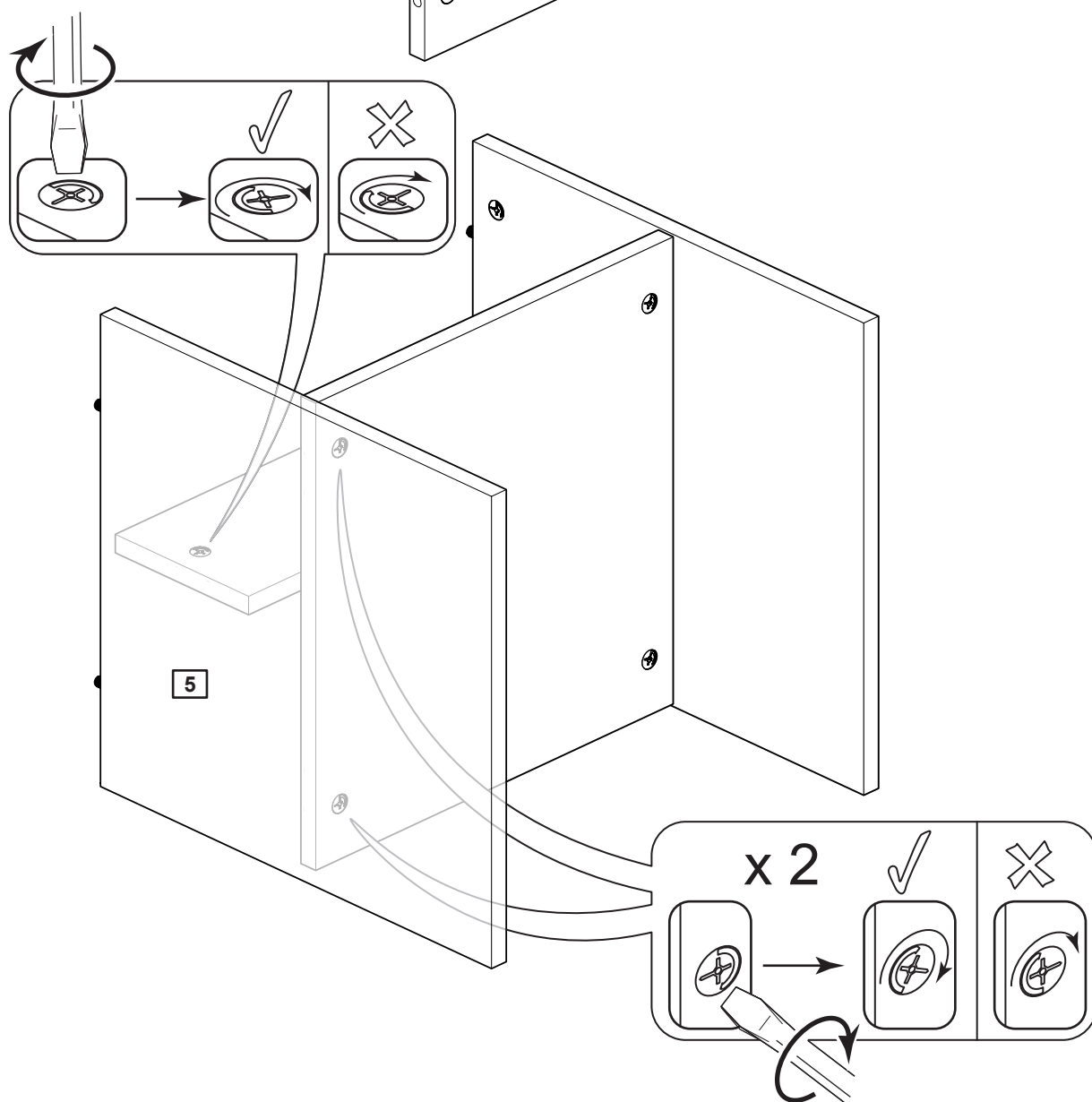
21



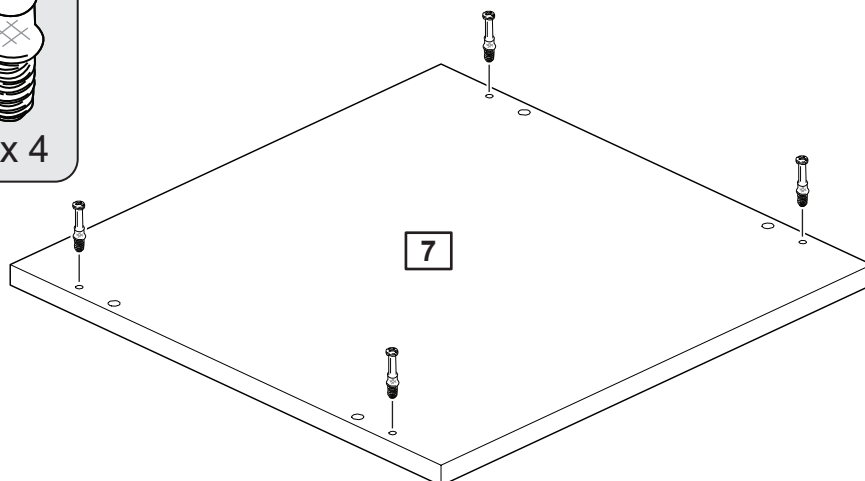
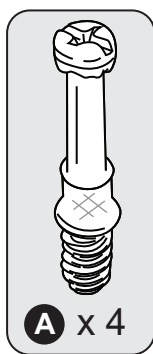
22



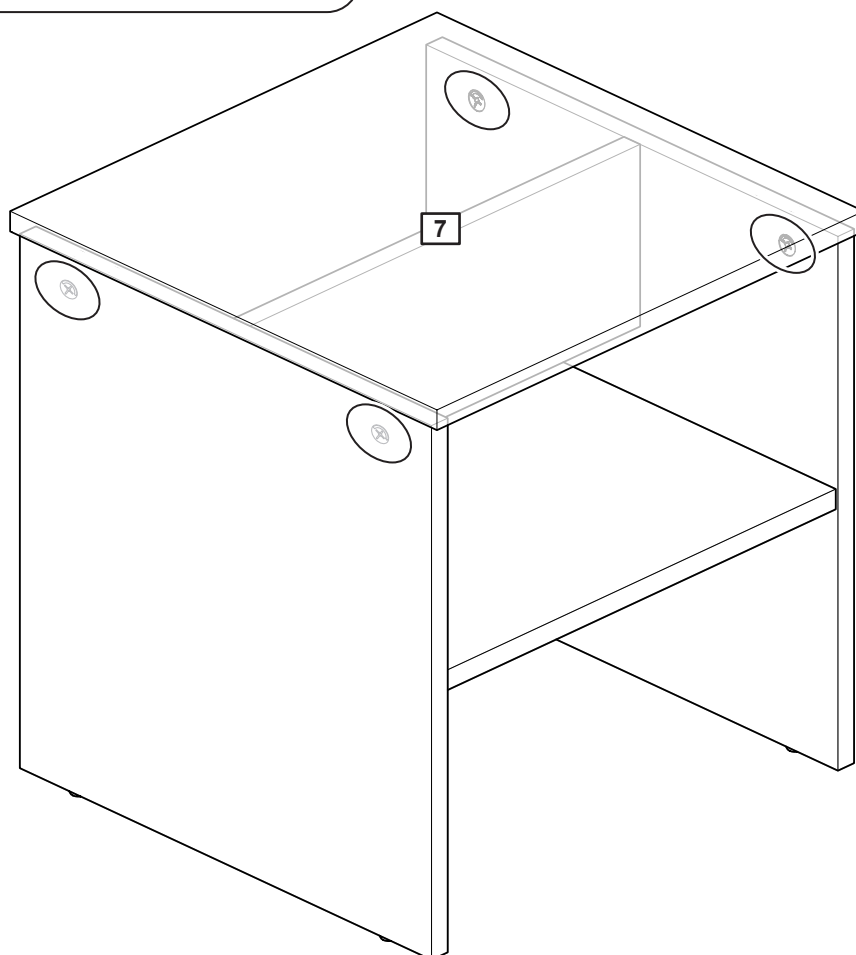
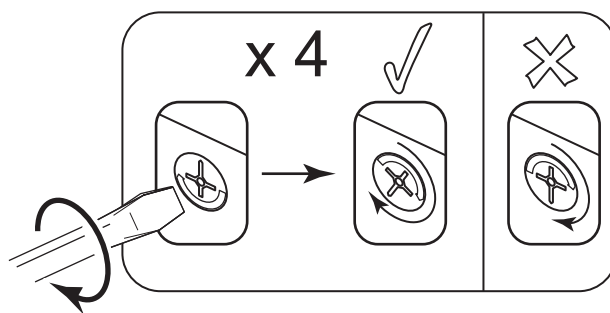
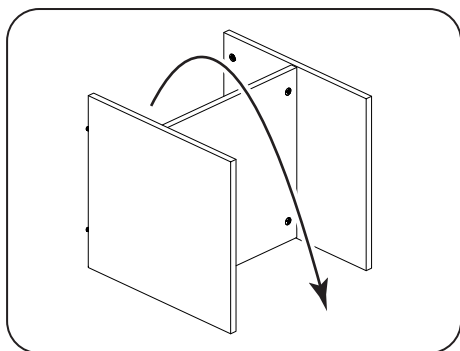
23



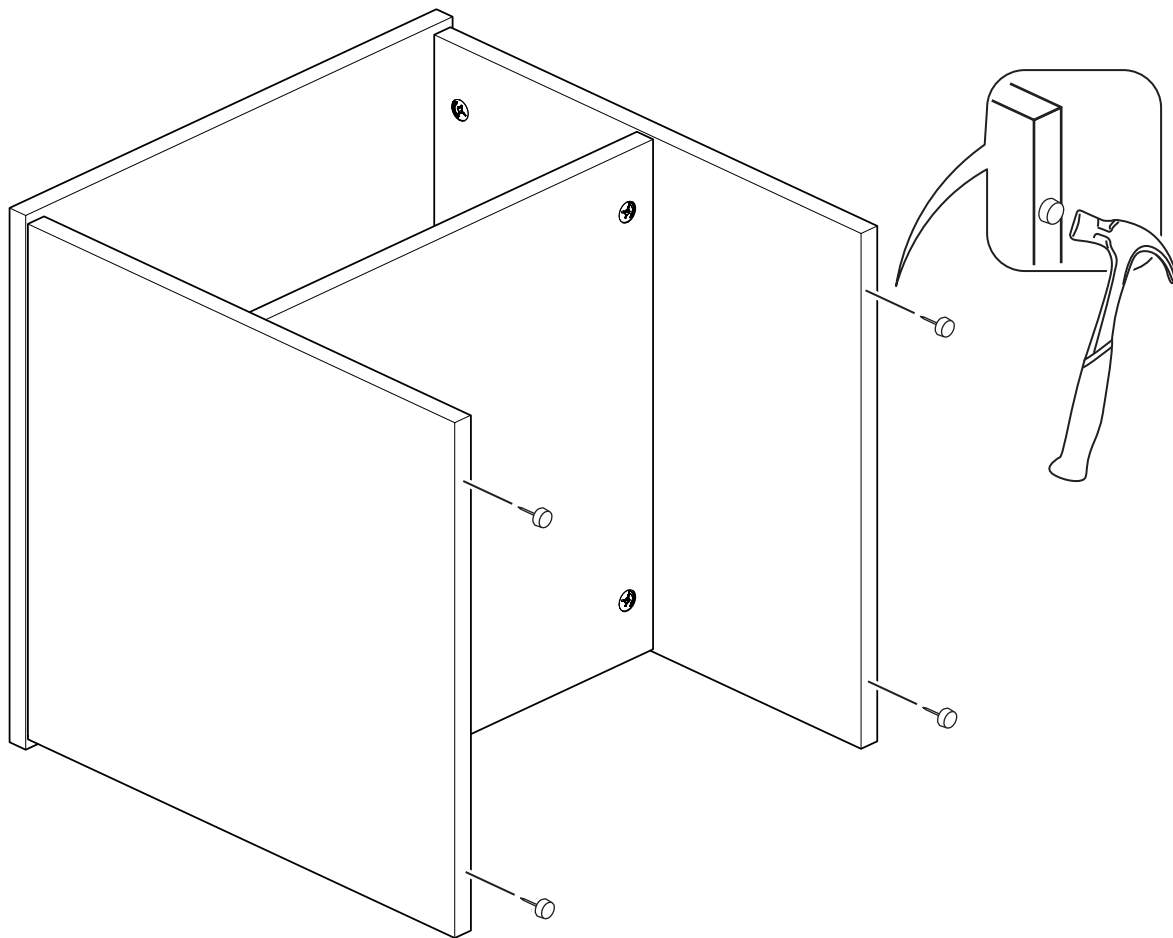
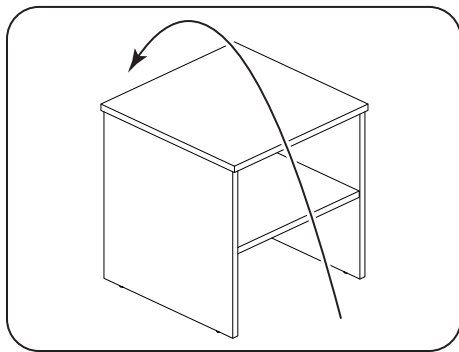
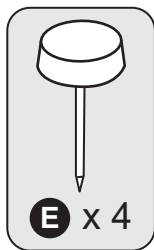
24



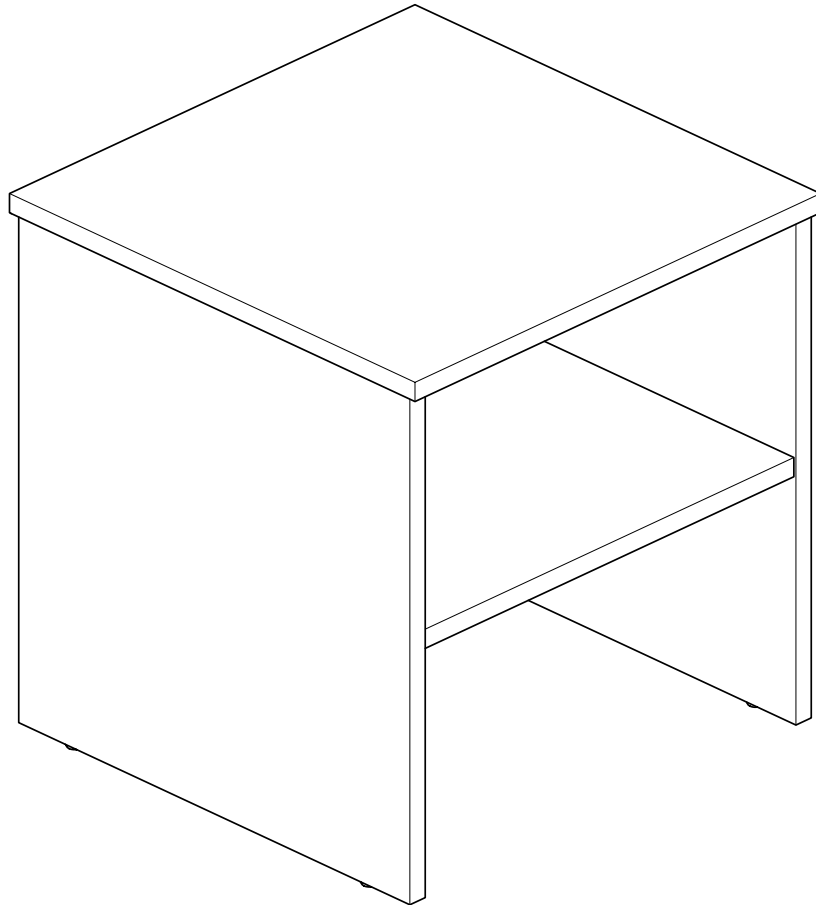
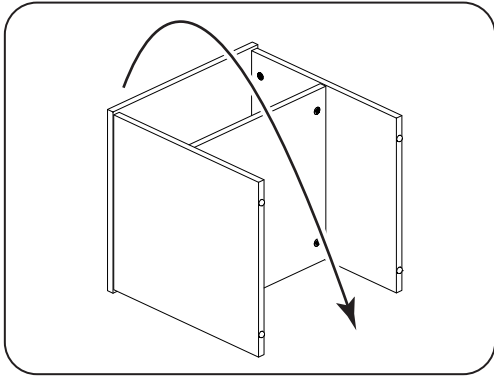
25



26



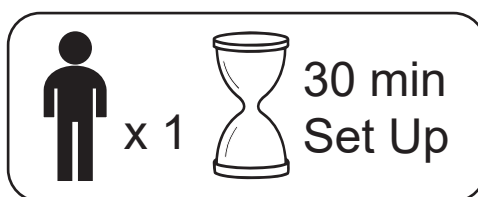
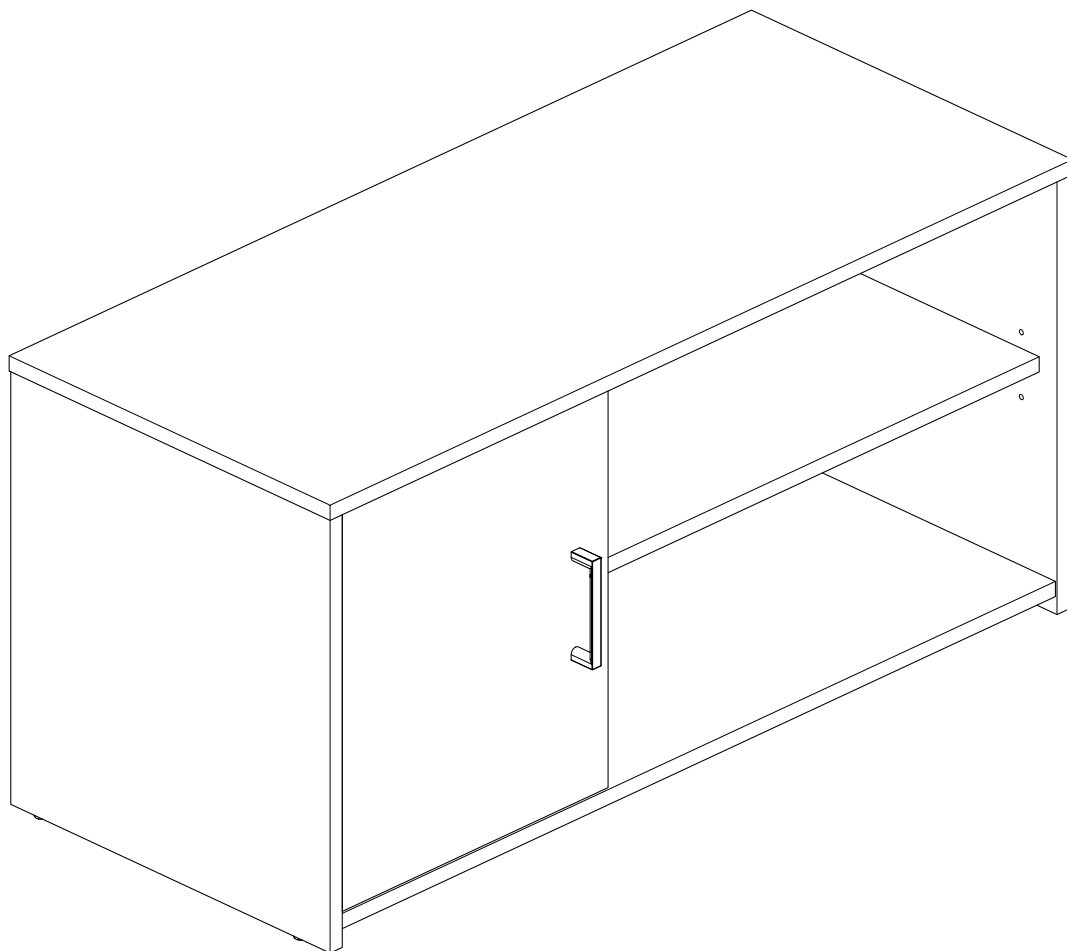
27



Assembly is complete

NEWLYN

TV Unit



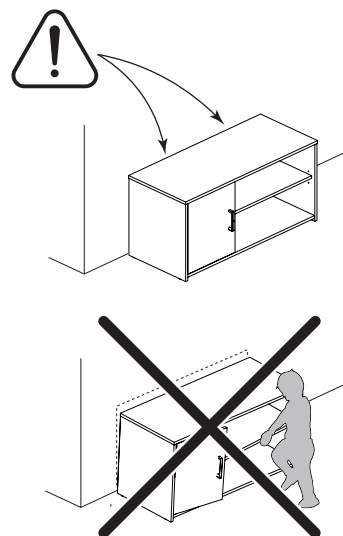
IMPORTANT - Retain these instructions for future reference

Safety

Important - Please read these instructions fully before starting assembly

- Warning: This unit weighs approximately 19 kgs. Please lift with care.
- Assembly to be carried out by a competent adult only.
- During assembly children should be kept away from the product due to possible risk of injury.
- Installation shall only be carried out exactly according to the manufacturer's instructions - otherwise a safety risk can occur if incorrectly installed.
- Do not use this item if any components are missing or damaged.
- Regularly check all fastenings to ensure they are properly tightened.

- **WARNING:** To prevent possible overbalancing this unit must be secured to a wall using the overbalance protector kits supplied.
- A unit that is allowed to topple can cause serious or fatal injury. In addition to wall fixing the unit, place heavy items on the lower shelves, do not put any heavy objects on top of the unit and never allow children to climb or hang on drawers, doors or shelves.
- Refer to guide after section 21 for wall fixing information.



Care Advice

- Check you have all the components and tools listed on relevant pages.
- Remove all fittings from the specified plastic bag and separate them into their groups.
- Parts of the assembly will be easier with 2 people.
- Make sure you have enough space to layout the parts before starting.
- Do not stand or put weight on the product, this could cause damage.

- When applicable, remove any protective film from the panels before they are used.
- Assemble the item as close to its final position (in the same room) as possible.
- Assemble on a soft level surface to avoid damaging the unit or your floor (use opened out unit carton).

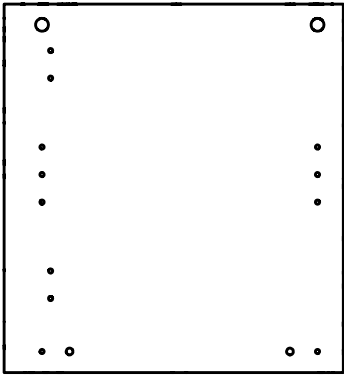


- Assembly videos are available throughout these instructions by scanning in the QR codes.



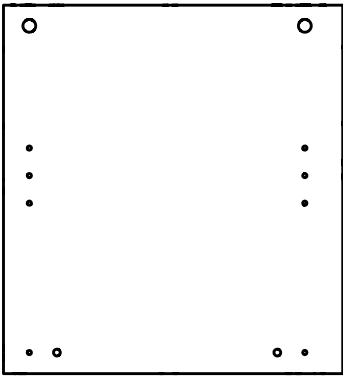
- We do not recommend the use of power drill/drivers for inserting screws, as this could damage the unit. Only use hand screwdrivers.
- Dispose of all packaging carefully and responsibly.
- Only clean with a damp cloth.

Cabinet Panels



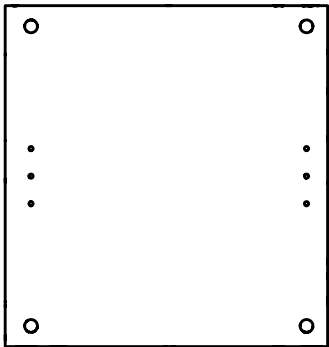
DF-00026214

1 42.8 x 39.4cm



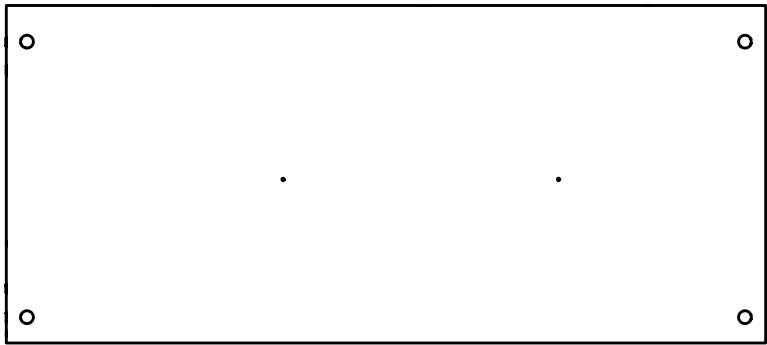
DF-00026215

2 42.8 x 39.4cm



DF-00026217

3 39.6 x 37.45cm



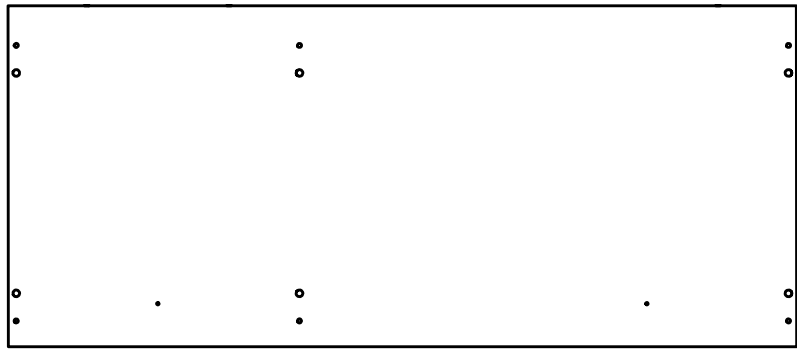
DF-00026216

4 88.2 x 39.2cm



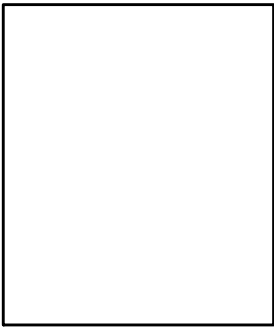
DF-00026220

5 55.3 x 37.2cm



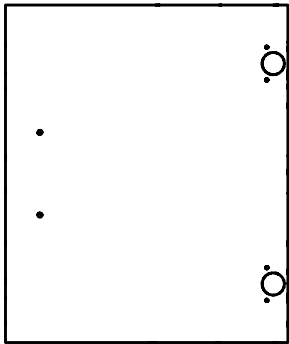
DF-00026213

6 91.6 x 39.6cm



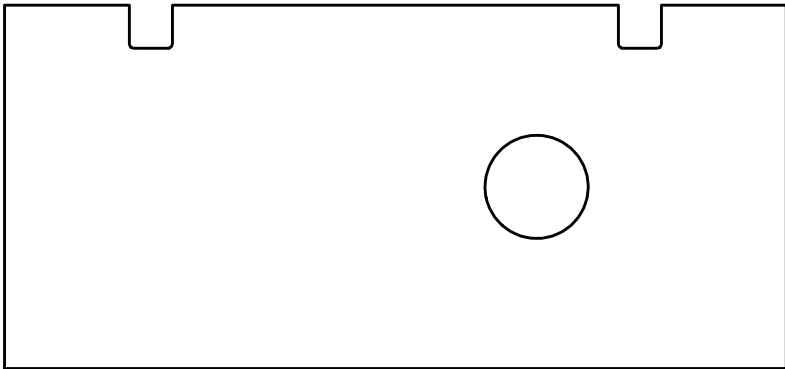
DF-00026219

7 37.2 x 31.4cm



DF-00026218

8 39.2 x 32.8cm



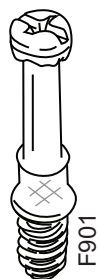
XDF-00026221

9 90.8 x 42.2cm

Fittings

Use these drawings to
correctly identify the fittings

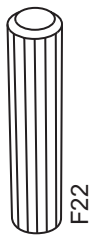
Bag 1



A x 12



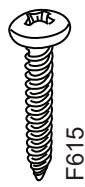
B x 12



C x 12



D x 2



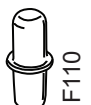
E x 2



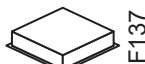
F x 4



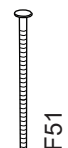
G x 4



H x 4



I x 2

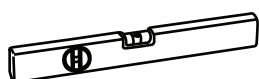
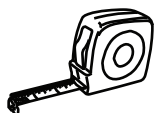


J x 18



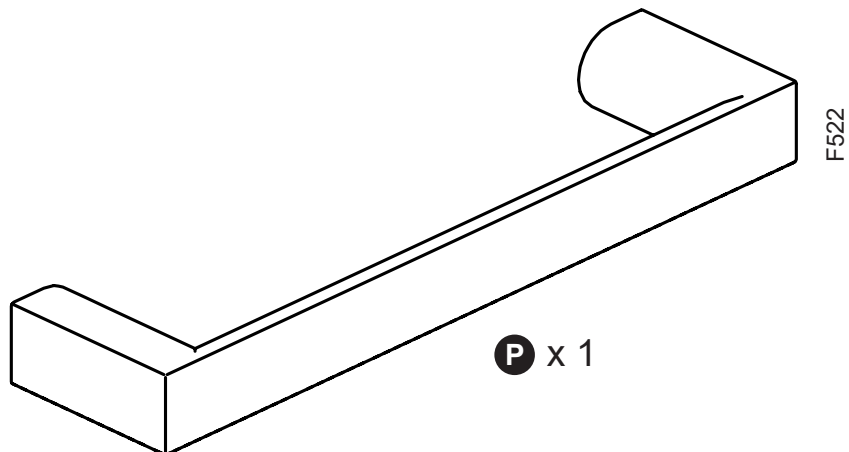
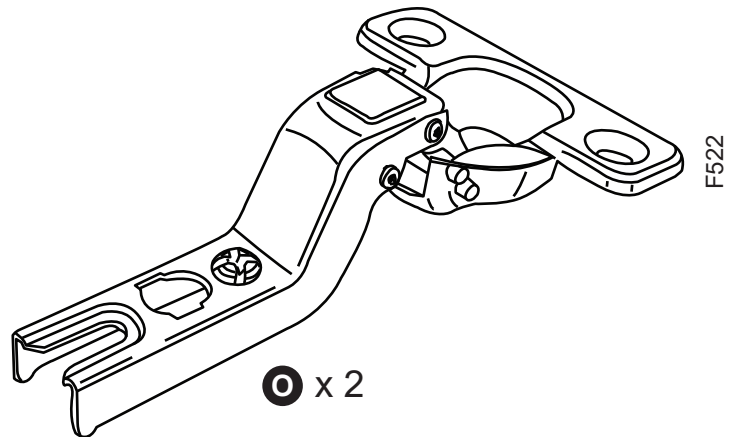
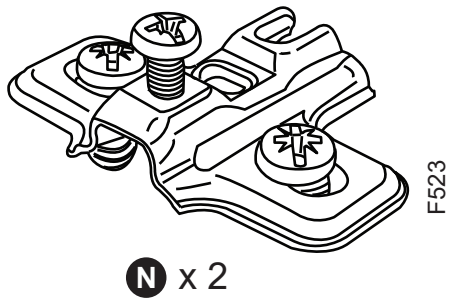
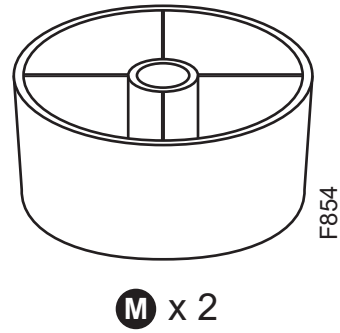
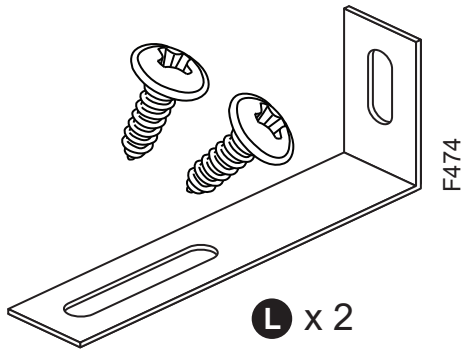
K x 4

Tools

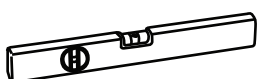
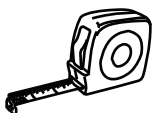


Only used for
drilling walls

Fittings

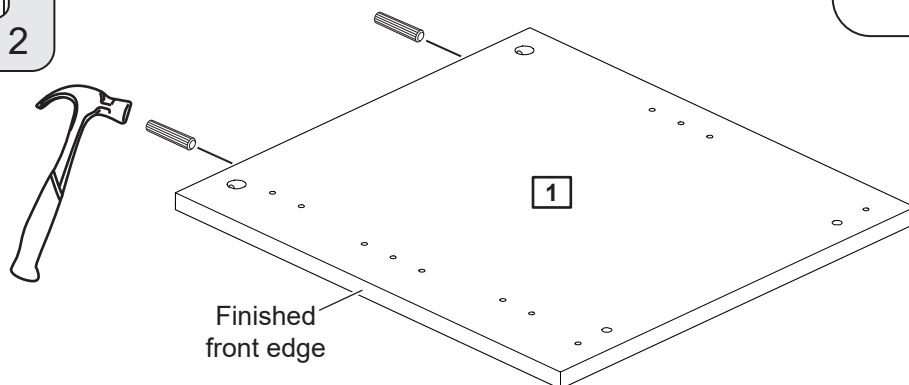
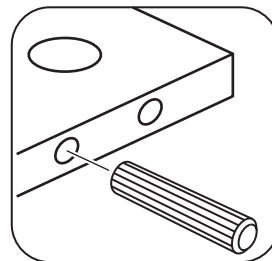
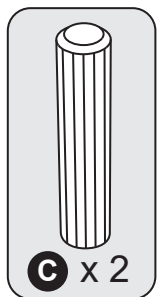


Tools

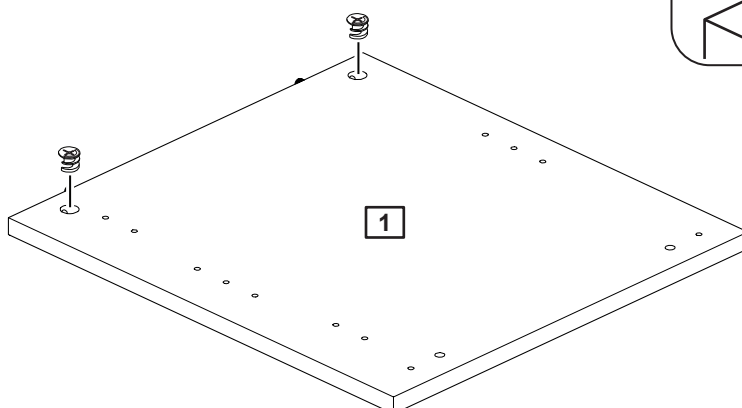
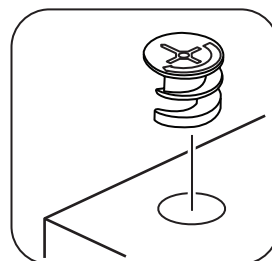
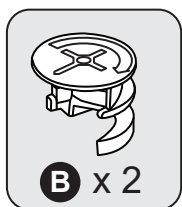


Only used for drilling walls

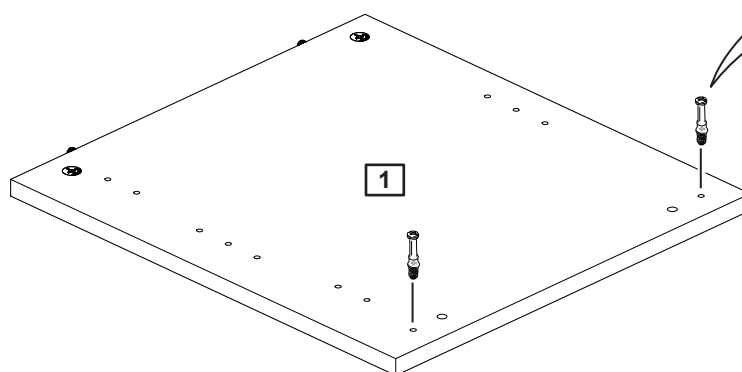
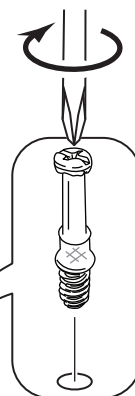
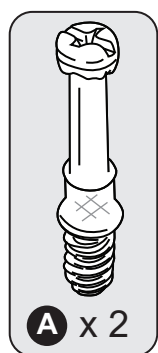
1



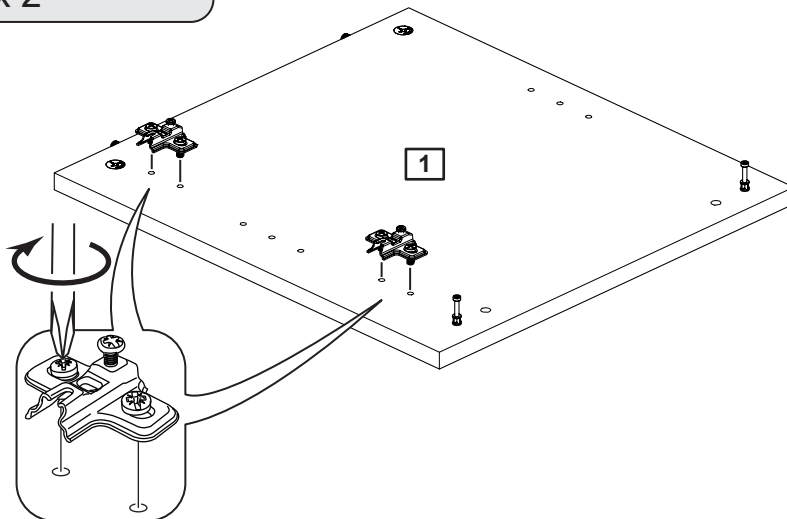
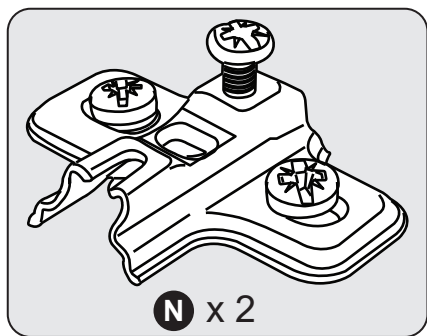
2



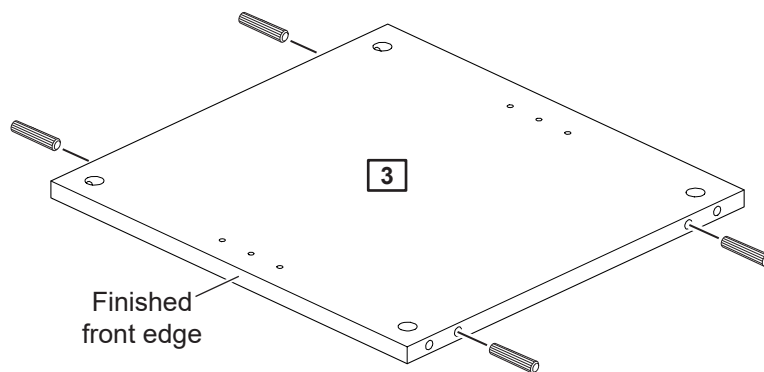
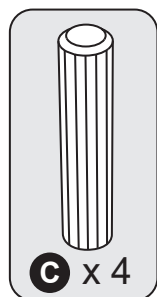
3



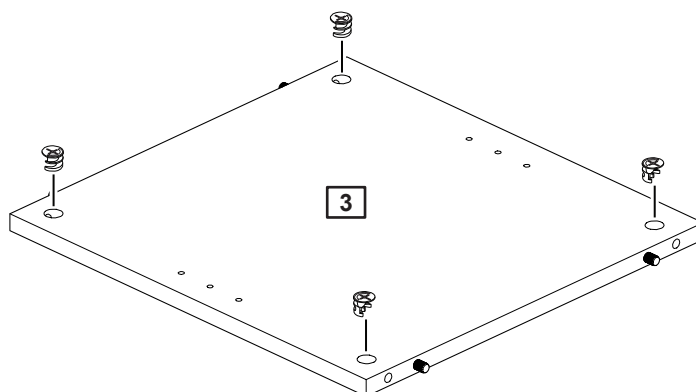
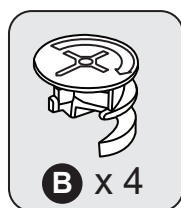
4



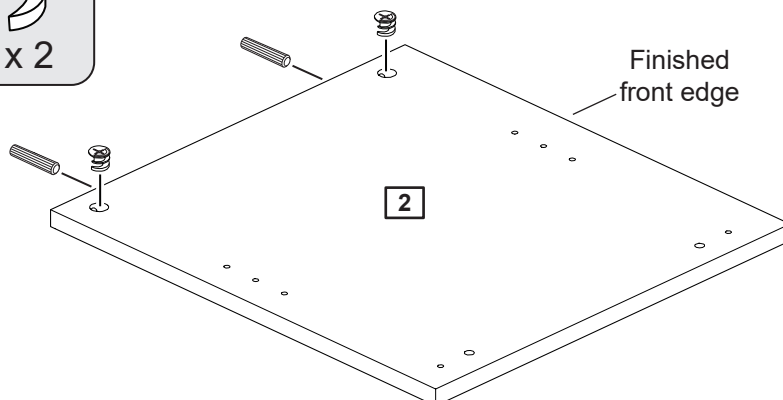
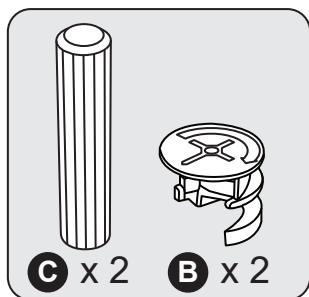
5



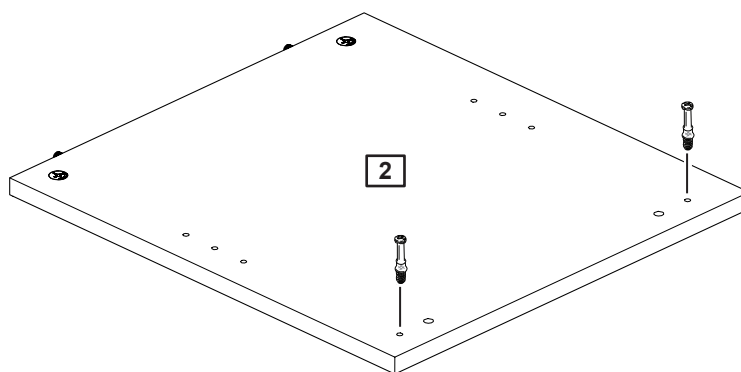
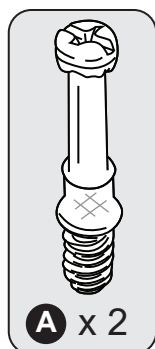
6



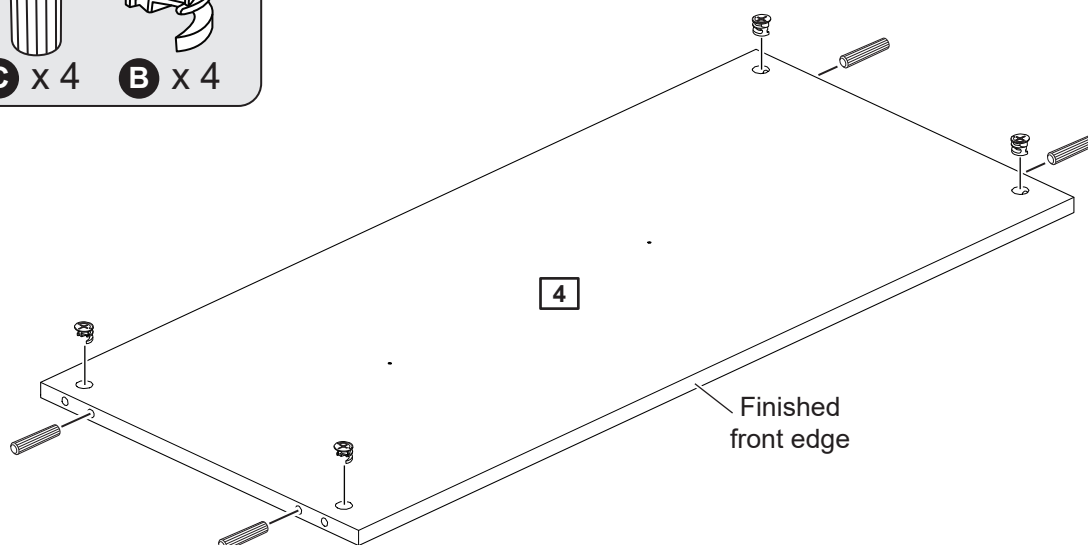
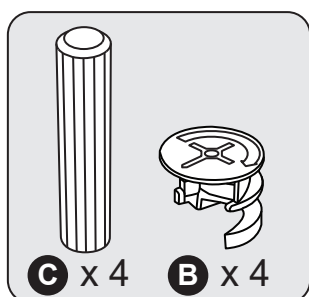
7



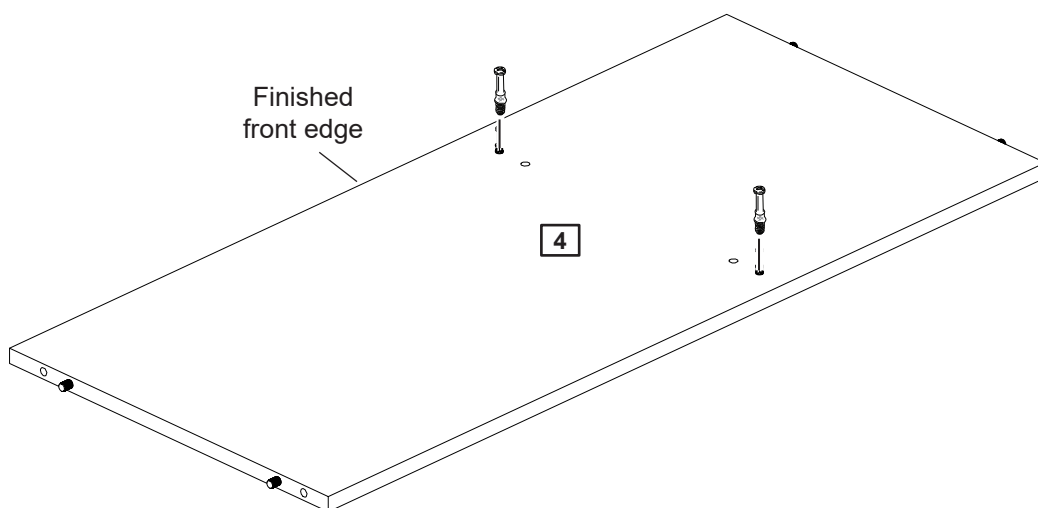
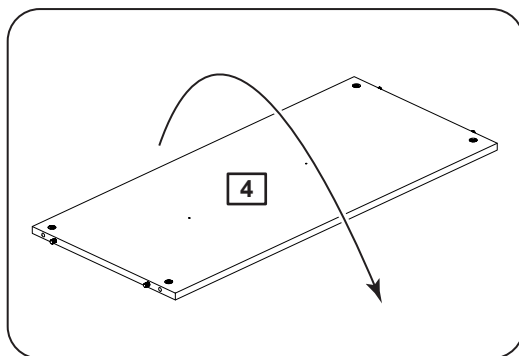
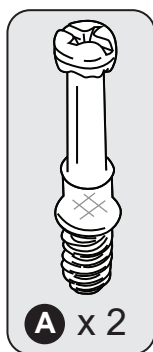
8



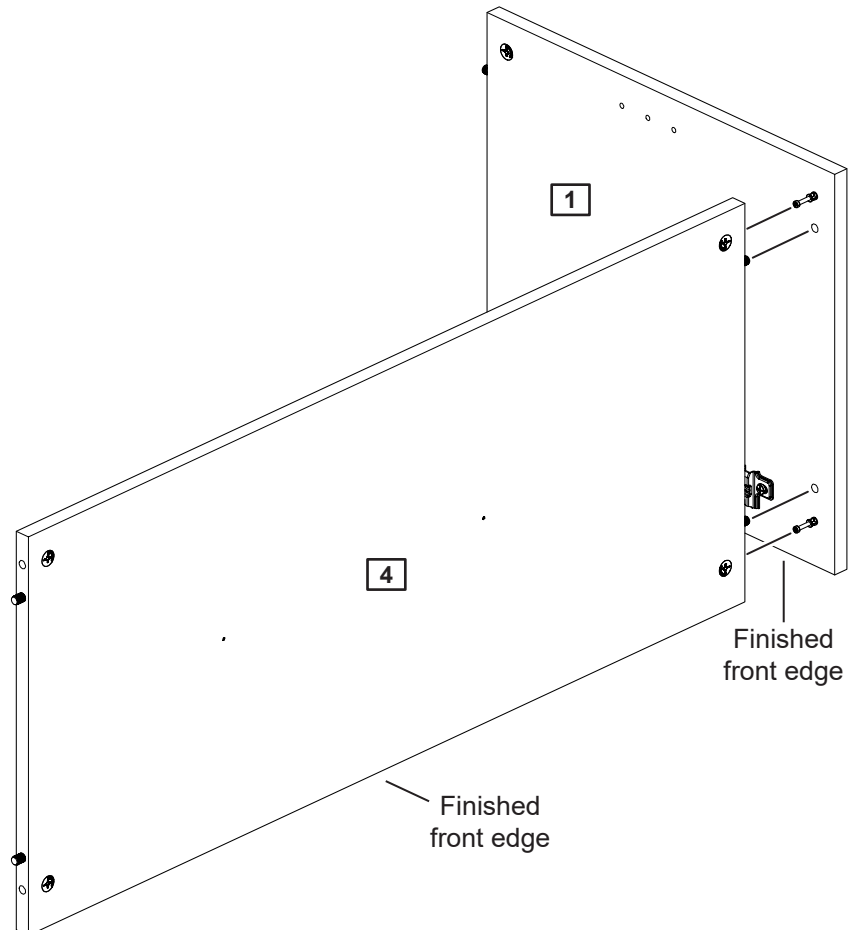
9



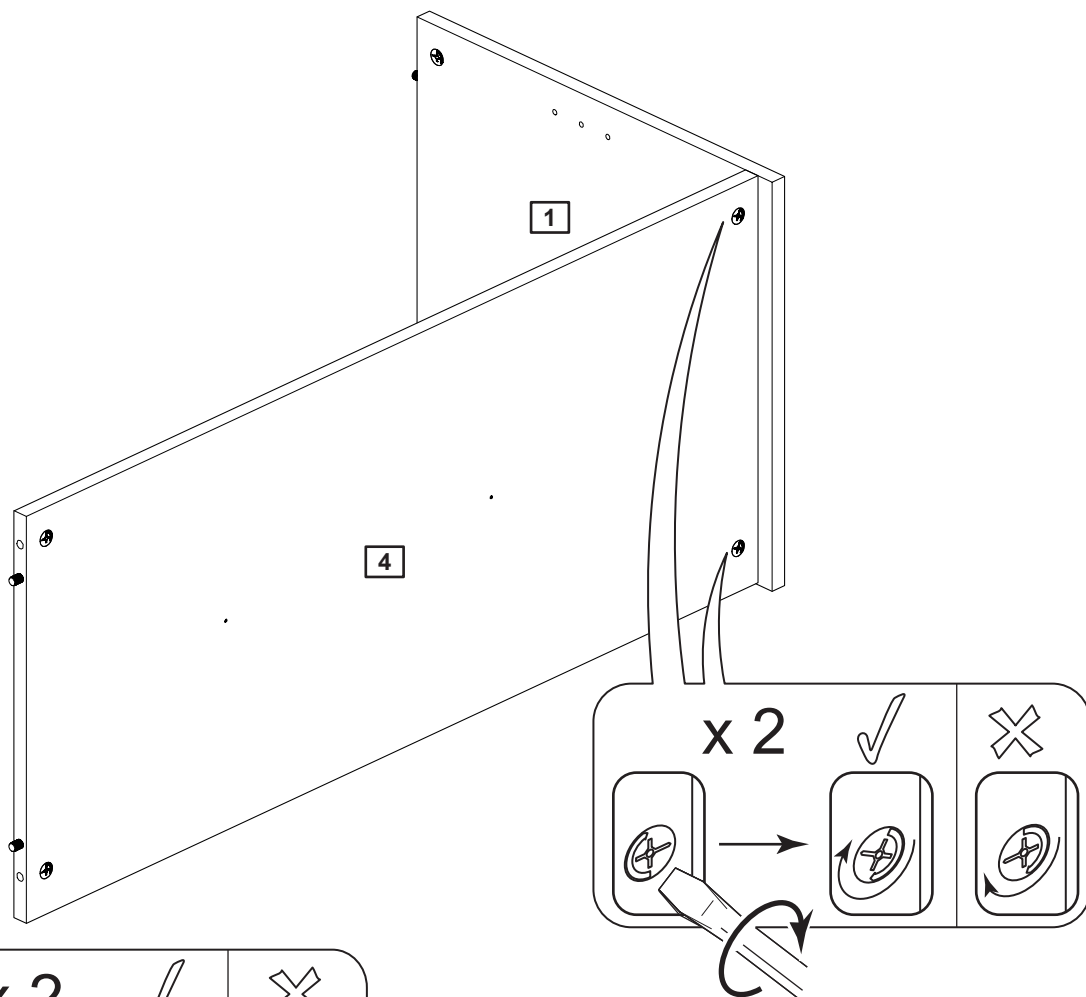
10



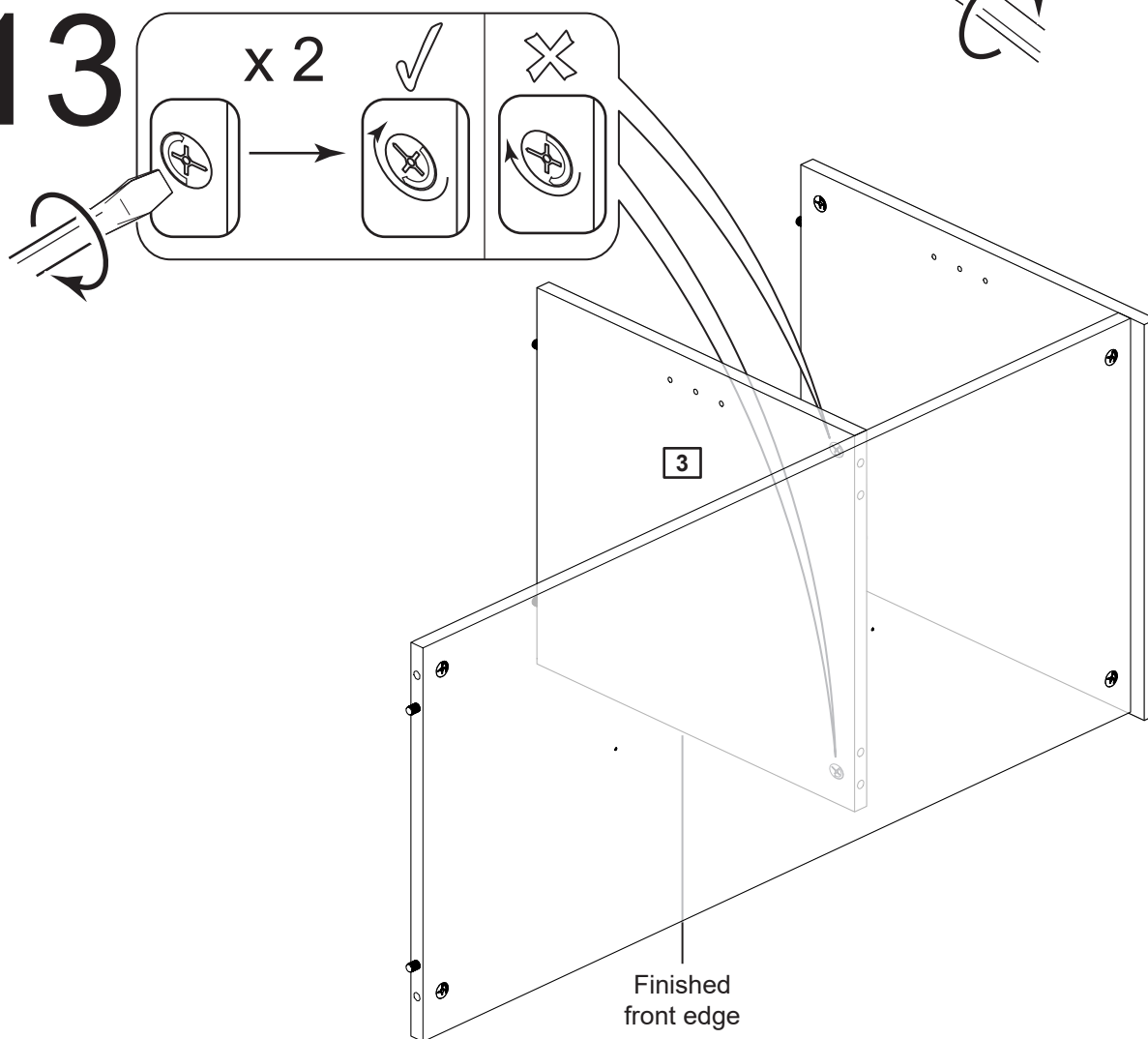
11



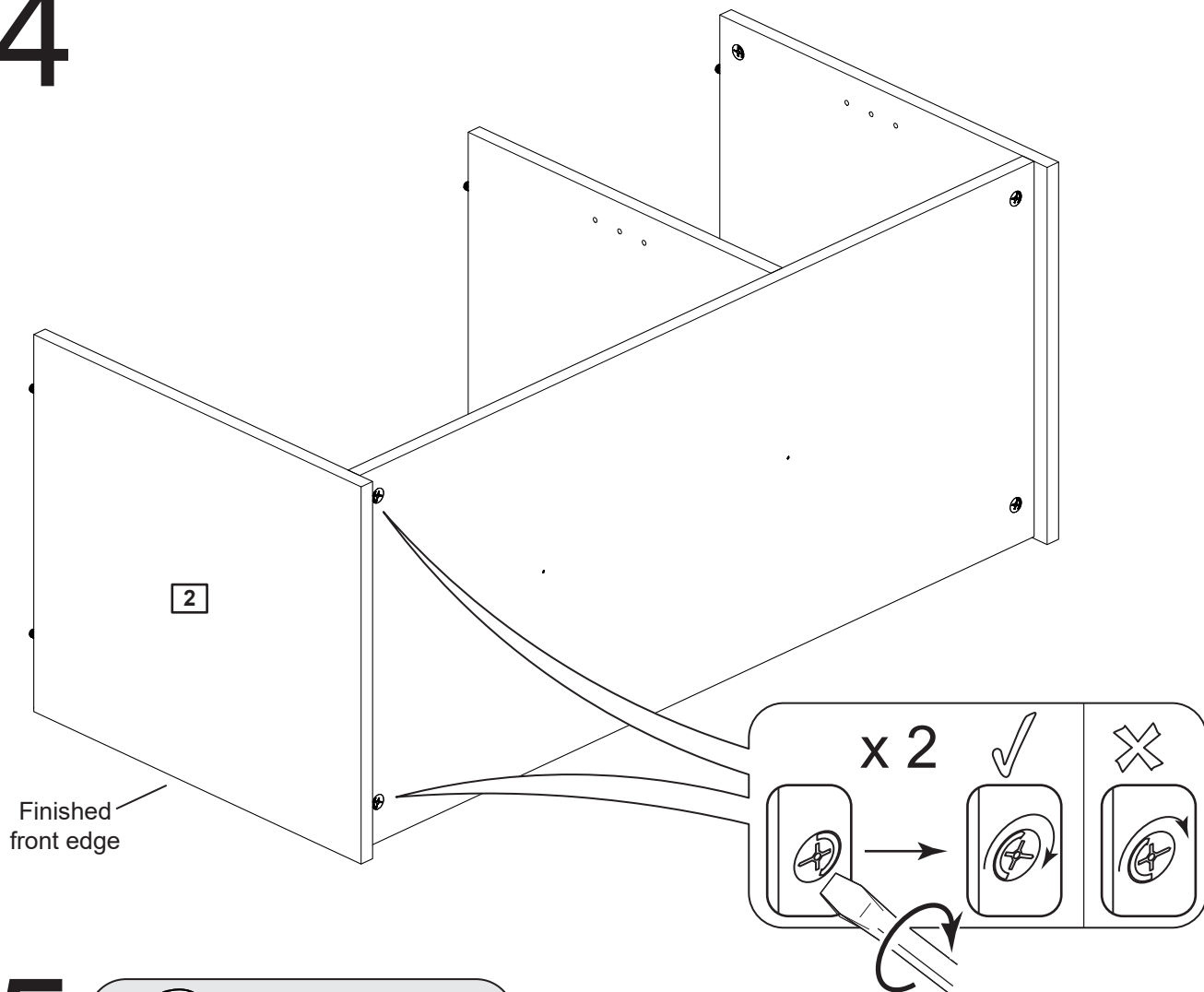
12



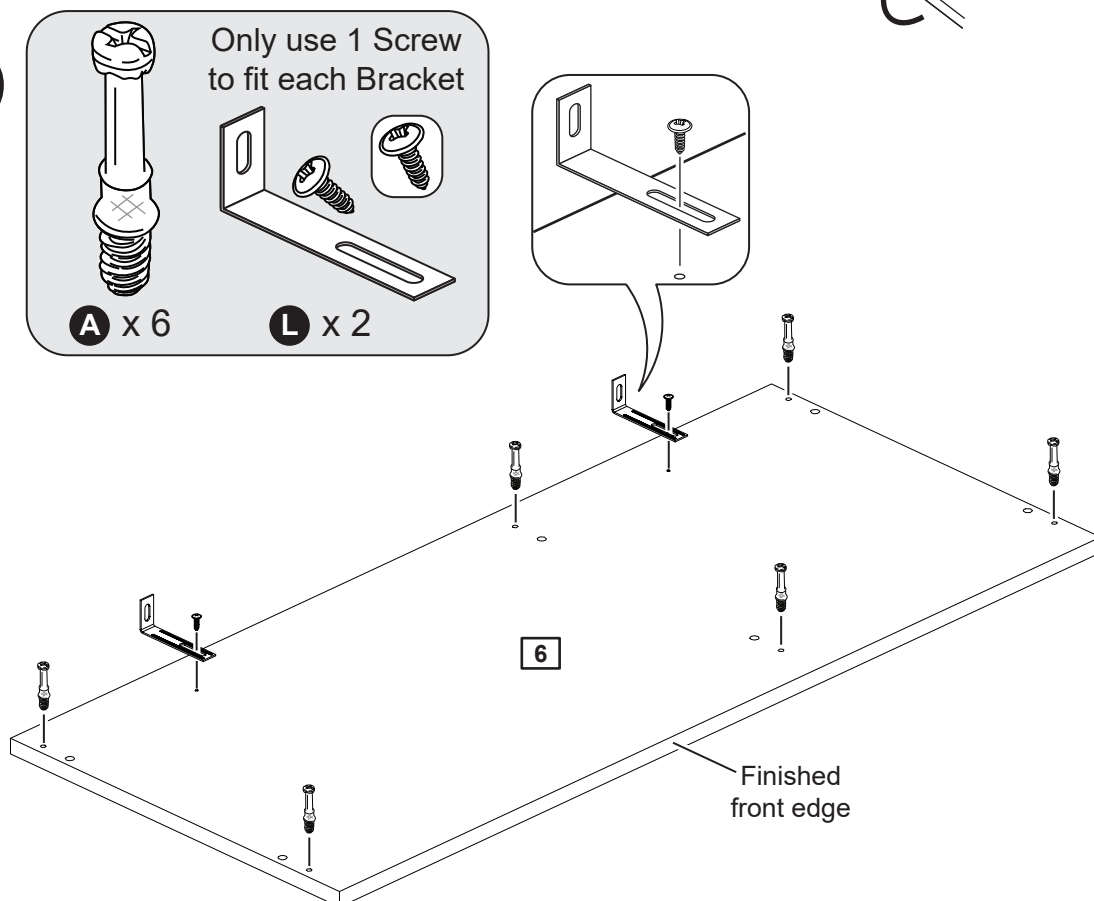
13



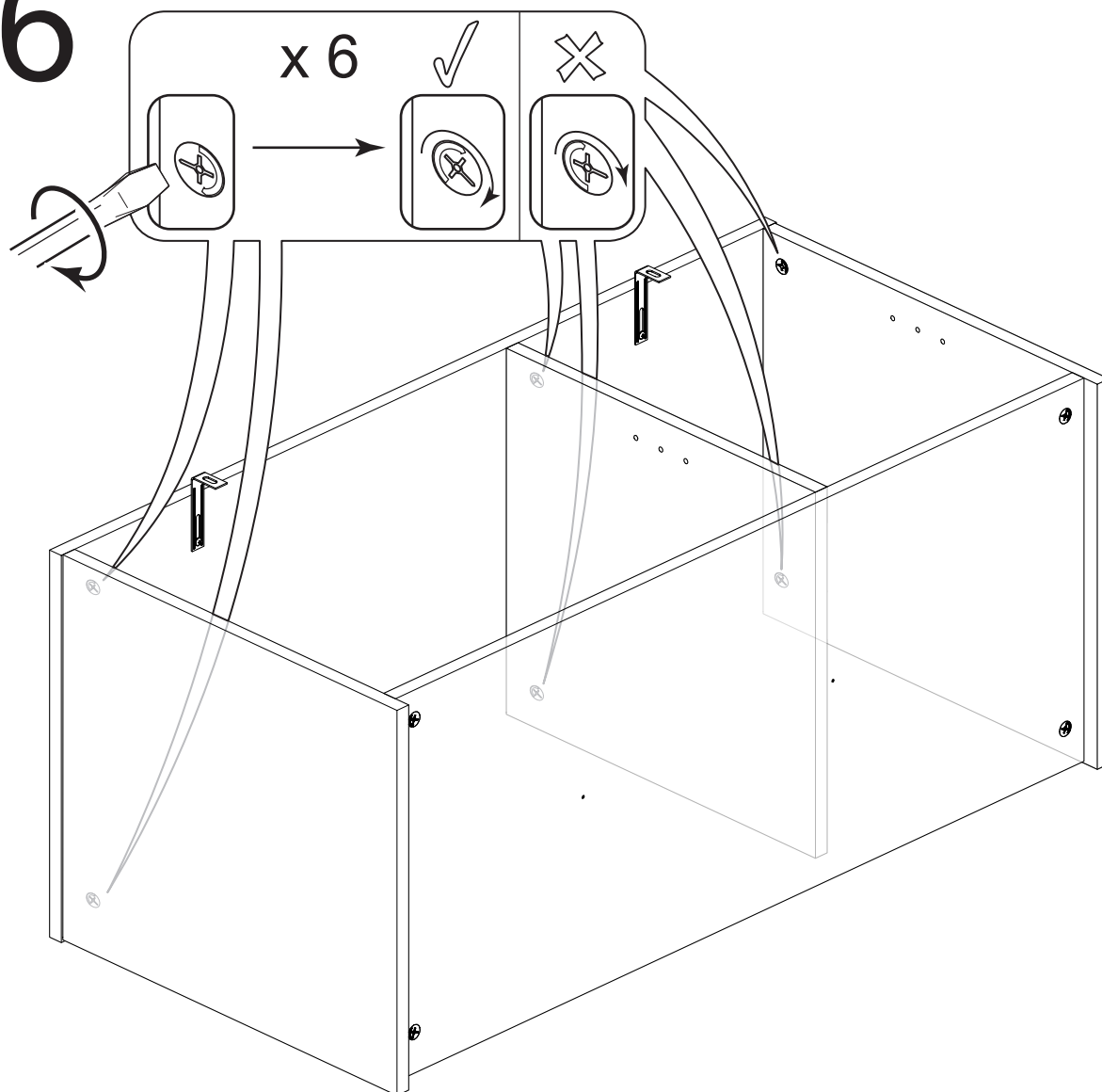
14



15



16

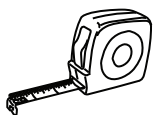


17



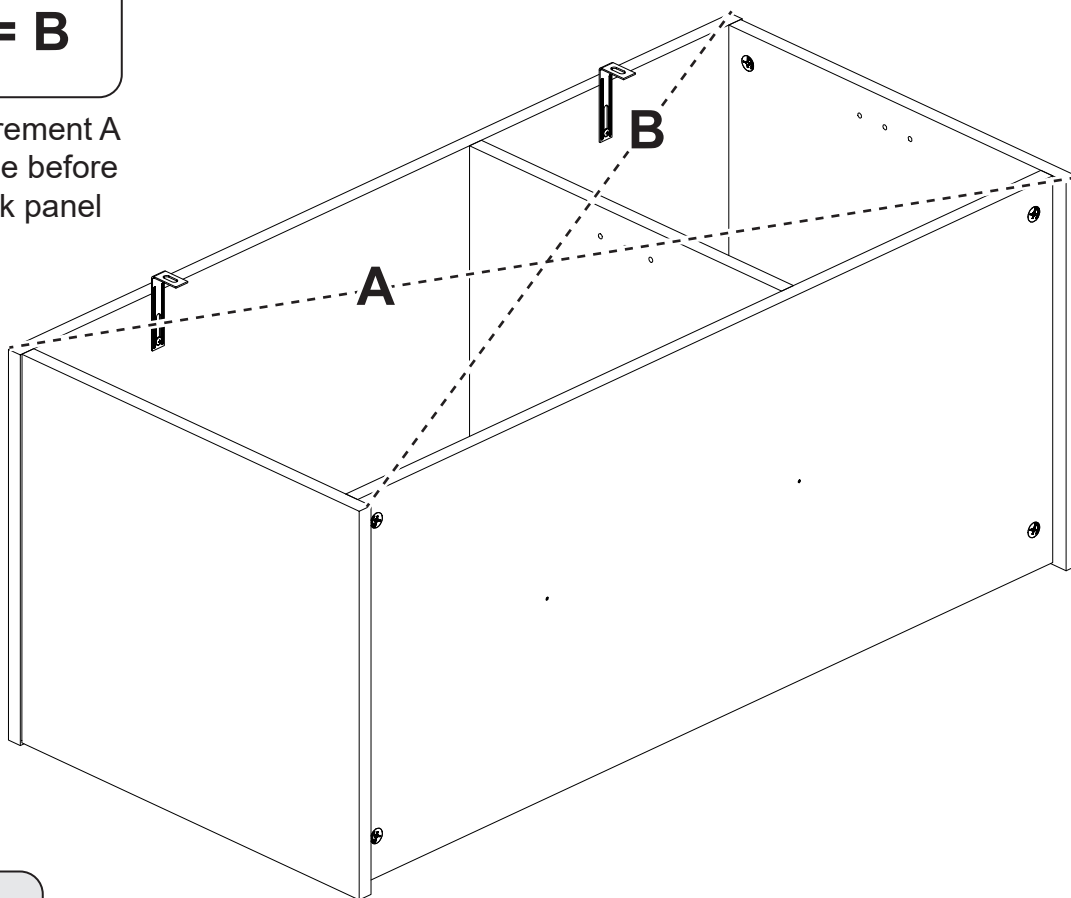
Squaring up a Chest and fitting the Back Panel

www.youtube.com/watch?v=Feal6541z7o

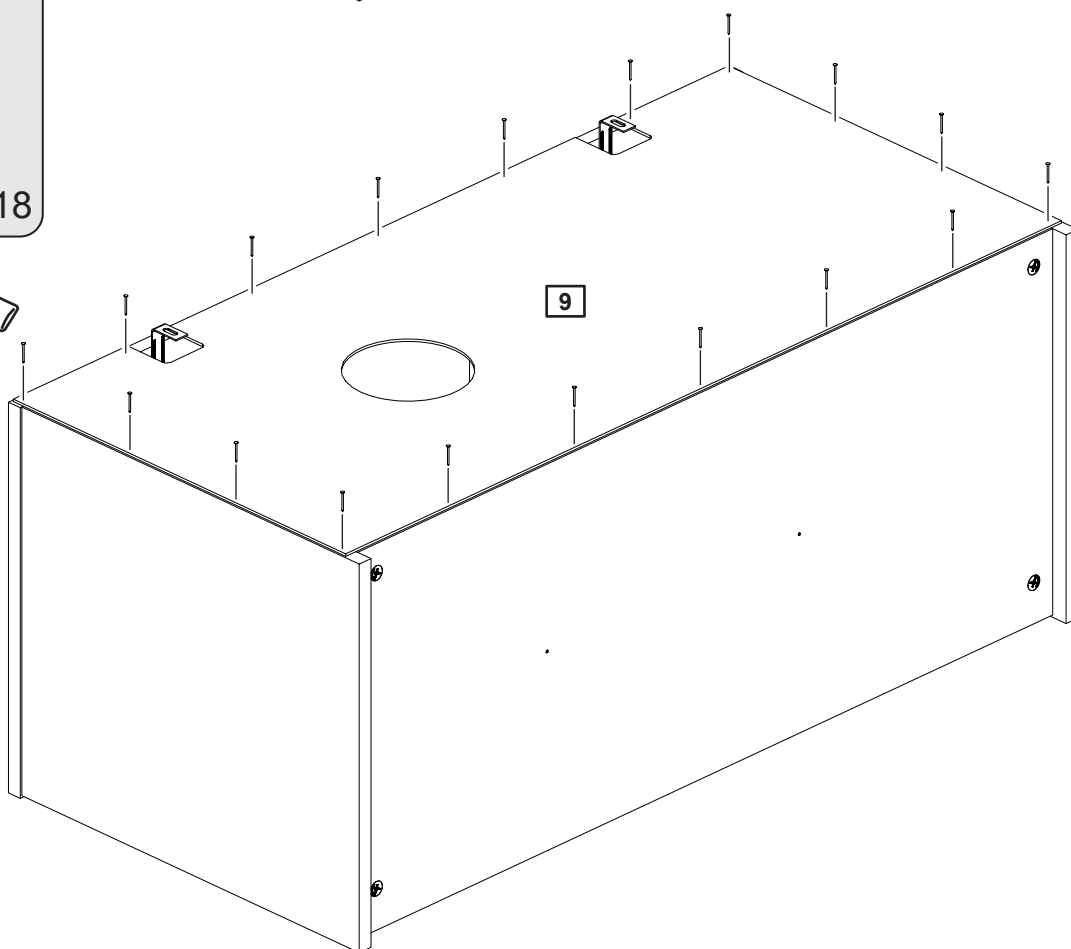
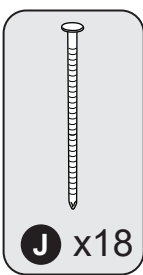


A = B

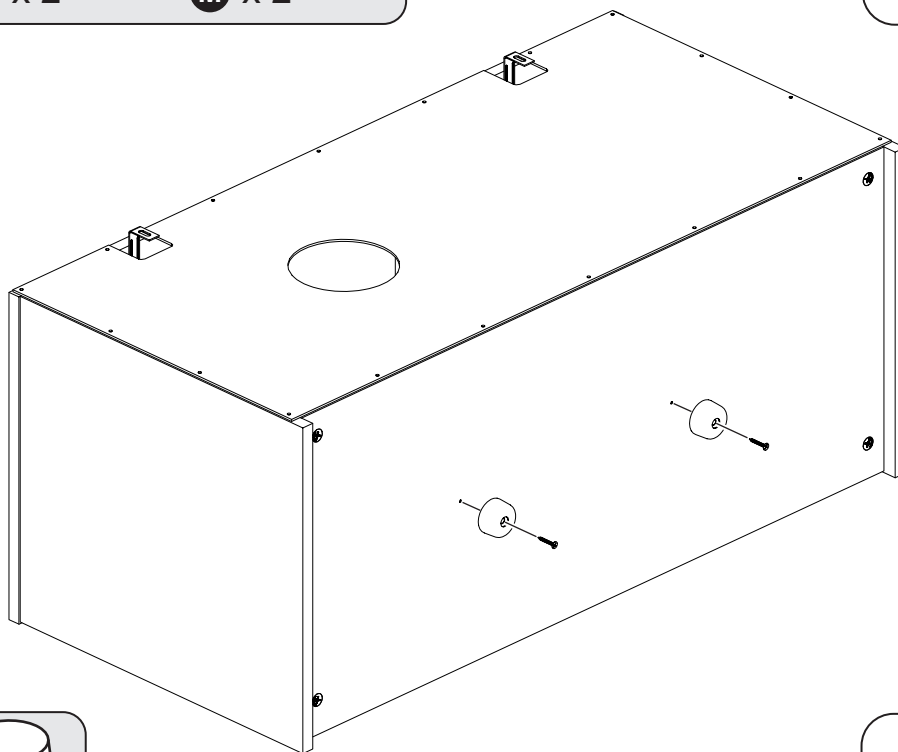
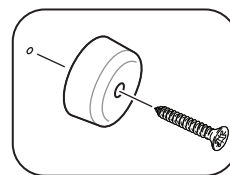
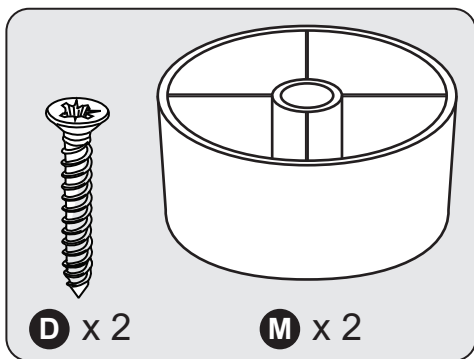
Make sure measurement A and B are the same before attaching the back panel



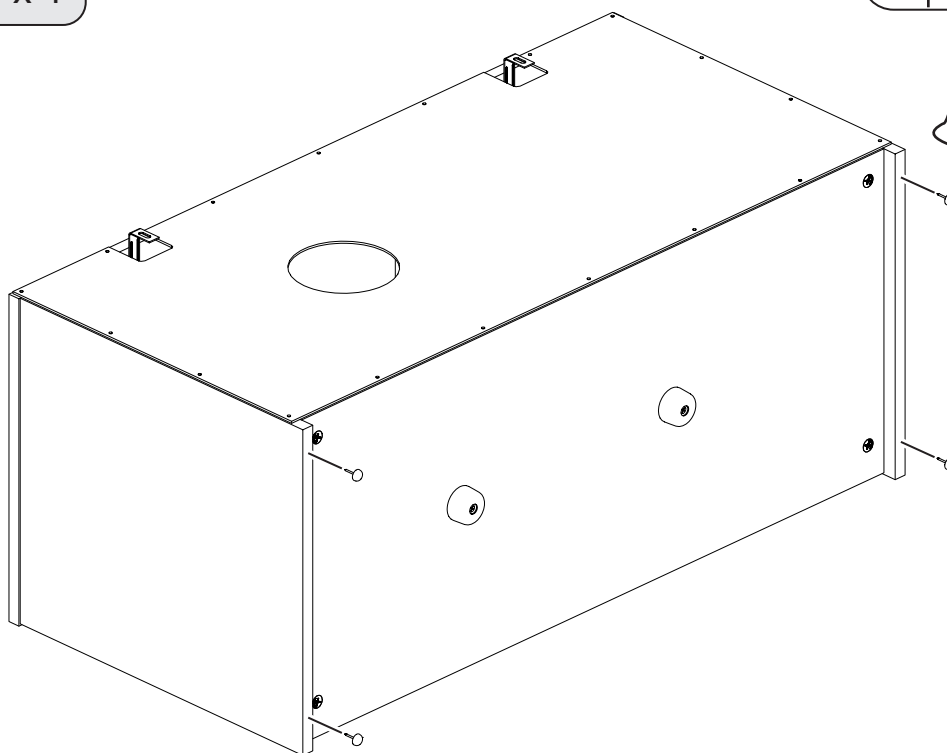
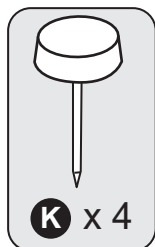
18



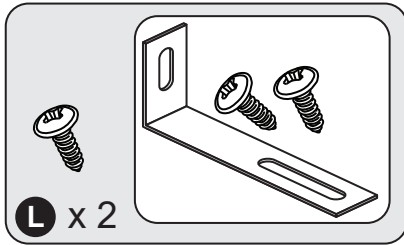
19



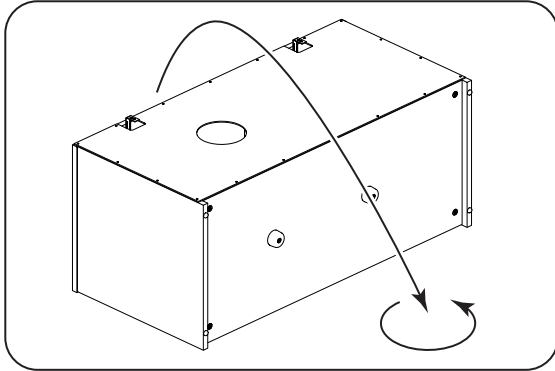
20



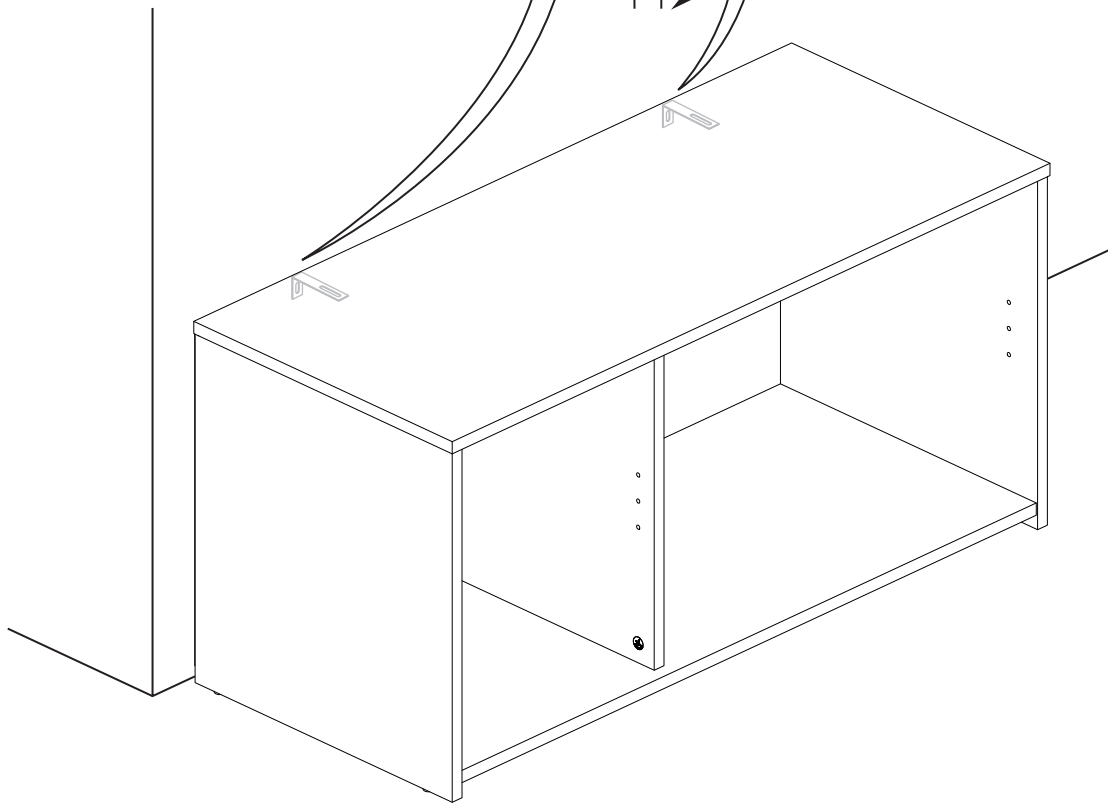
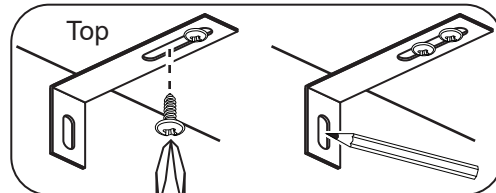
21



WARNING!
In order to prevent overturning
this product must be used with the
wall attachment device provided



*See the next section for a guide
to wall mounting and fixings*



Slide the Brackets against the wall. Fit the 2nd screws supplied
with the Brackets into the underside of the Top panel.

Mark the slot at the back of the Brackets for drilling into the wall.

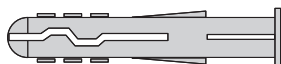
Wall fixings are not supplied as they will need to suit the wall type.

**Note: Take care when drilling the wall that you do not drill
into any pipes, wires etc.
If in doubt, consult an expert.**

A Guide to Wall Mounting & Fixings

Important note:

If plastic wall plugs are supplied with your product:



- these are only suitable for use in masonry walls.

If you are in any doubt about the correct wall plugs for your wall, seek professional advice.


Failure of the product due to using incorrect fixings is the responsibility of the installer.



Important: When drilling into walls always check that there are no hidden wires or pipes etc.

Make sure that the screws and wall plugs being used are suitable for supporting your unit. Consult a qualified tradesperson if you are unsure.

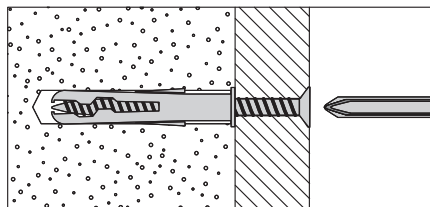
Hints:

- 1: General rule:  Always use a larger screw and wall plug if you are not sure.
- 2: Ensure you use the recommended drill bit to match the wall plug and hole size.
- 3: Ensure you drill the hole horizontally, do not force the drill or enlarge the hole.
- 4: Take extra care when drilling high walls, ceilings and ceramic tiles. Ensure wall plugs are inserted beyond the thickness of the ceramic tiles to avoid the tiles splitting or cracking.
- 5: Ensure wall plugs are well fitted and are a tight fit in the drilled hole.

Types of walls

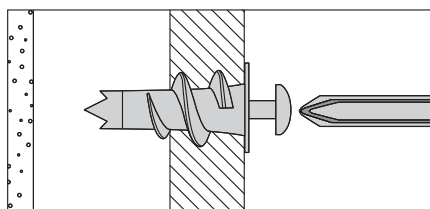
You can use one of the following types of wall plug if your walls are made of brick, breeze block, concrete, stone or wood.

No.1 "General Purpose" wall plug



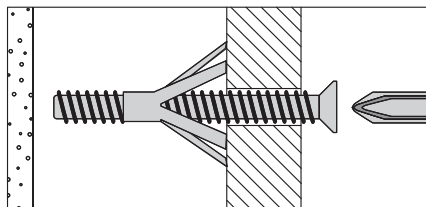
Generally aerated blocks should not be used to support heavy loads, use a specialist fitting in this case. For light loads, general purpose wall plugs can be used.

No.2 "Plasterboard" wall plug



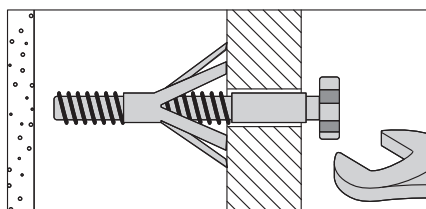
For use when attaching light loads on to plasterboard partitions.

No.3 "Cavity Fixing" wall plug



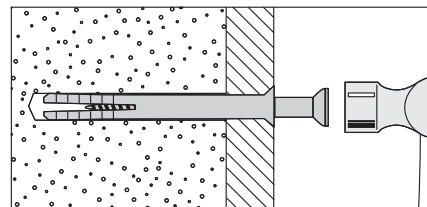
For use with plasterboard partitions or hollow wooden doors.

No.4 "Cavity Fixing-Heavy Duty" wall plug



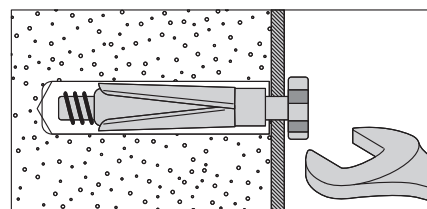
For use when fitting or supporting heavy loads such as shelving, wall cabinets and coat racks.

No.5 "Hammer Fixing" wall plug



For use with walls stuck with plasterboard. The hammer fixing allows it to be fixed to the wall rather than the plasterboard. Always check the fixing is secure to the retaining wall.

No.6 "Shield Anchor" wall plug Heavy loads



For use with heavier loads such as TV & HiFi speakers and satellite dishes etc.

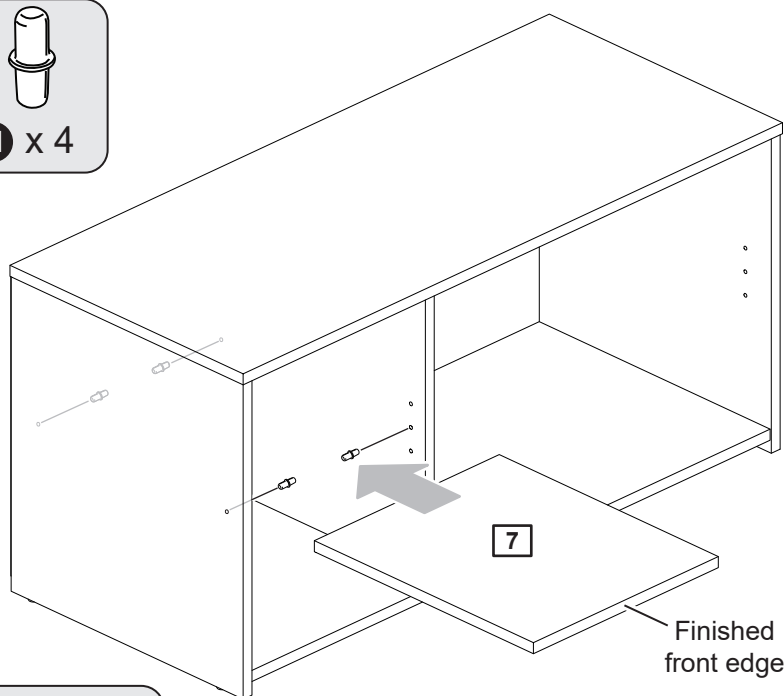
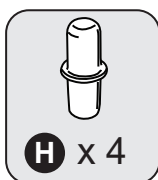


Care & Maintenance

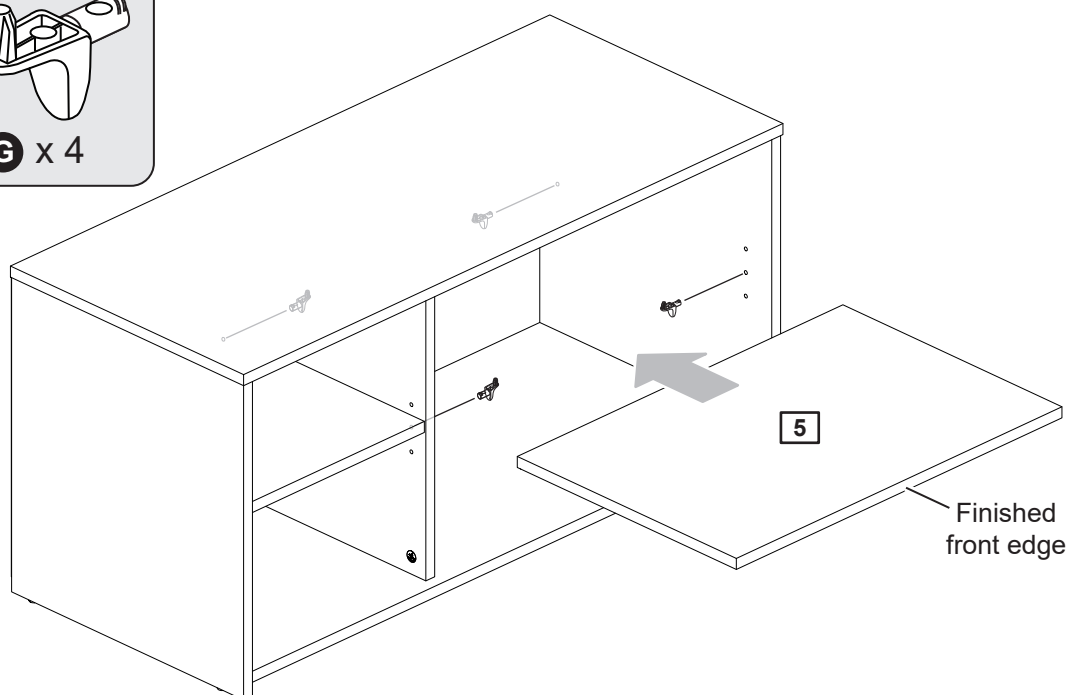
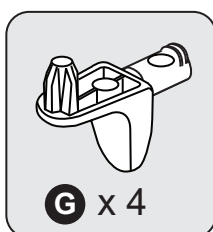
Safety: Always check the fitting and location to ensure your safety in and around the home.

Fitting: From time to time check the fitting to ensure the wall plugs or screws do not become loose.

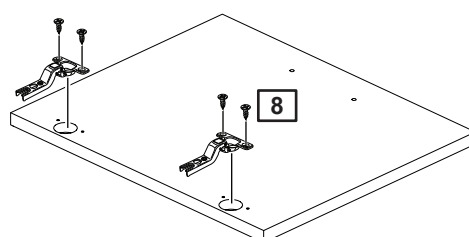
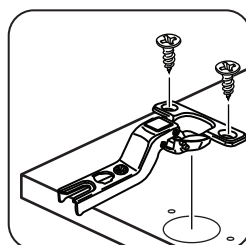
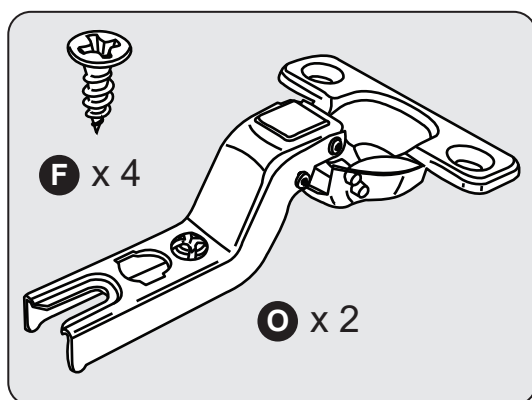
22

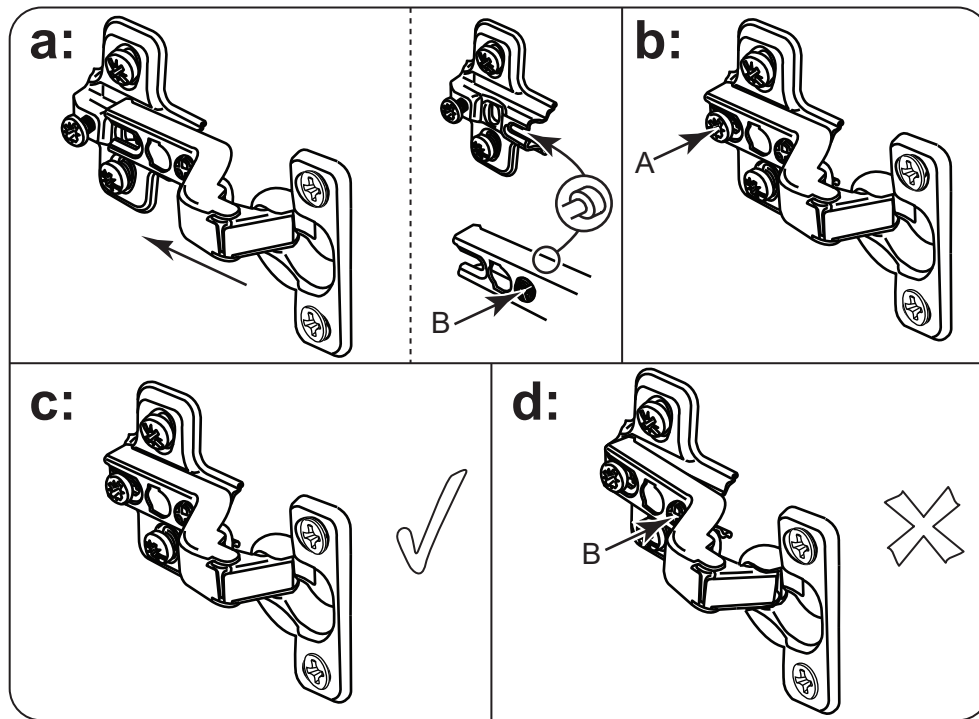


23



24





Note: The easiest way to attach each Door is to fit the top Hinge first, then align and fit the other Hinges.



Hinge Fixing and Door Adjustment

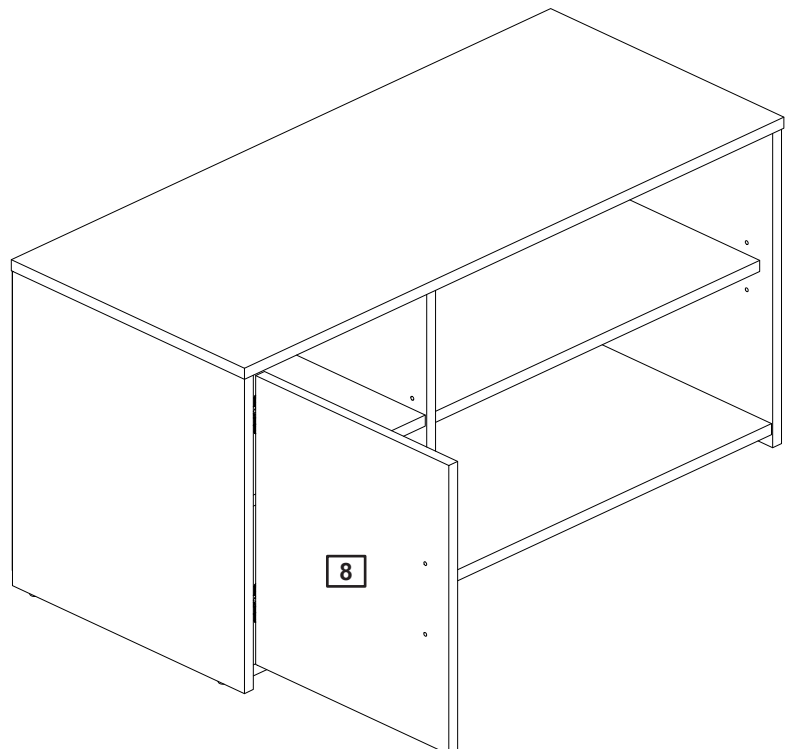
www.youtube.com/watch?v=wIMhUHeLBtg

a: Push the Hinge onto the front part of the Hinge Plate.
The recess at the bottom of screw B goes into the slot in the Hinge Plate.

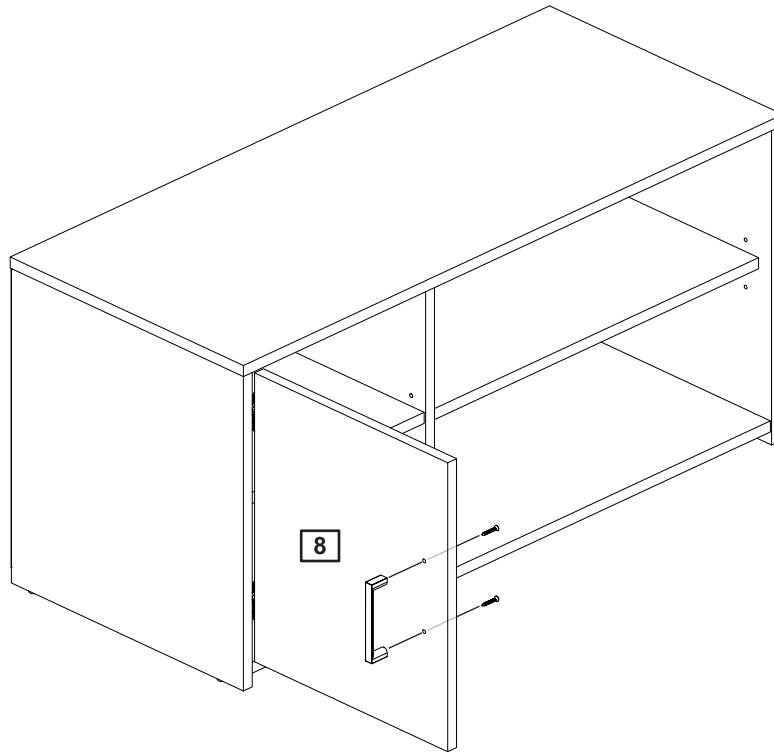
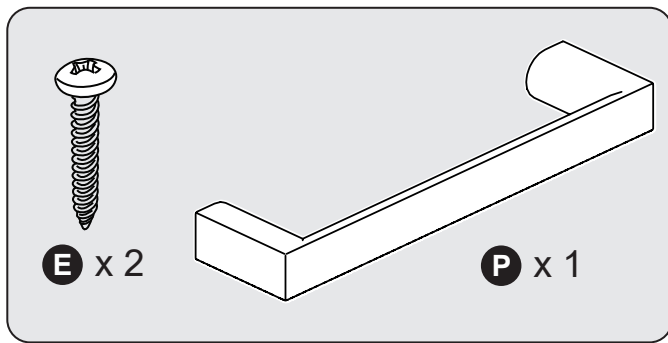
b: Keep the Hinge FLAT against the Hinge Plate as you slide it across as far as it will go.
Tighten screw A.

c: The Hinge must be flat against the Hinge Plate prior to any adjustment.

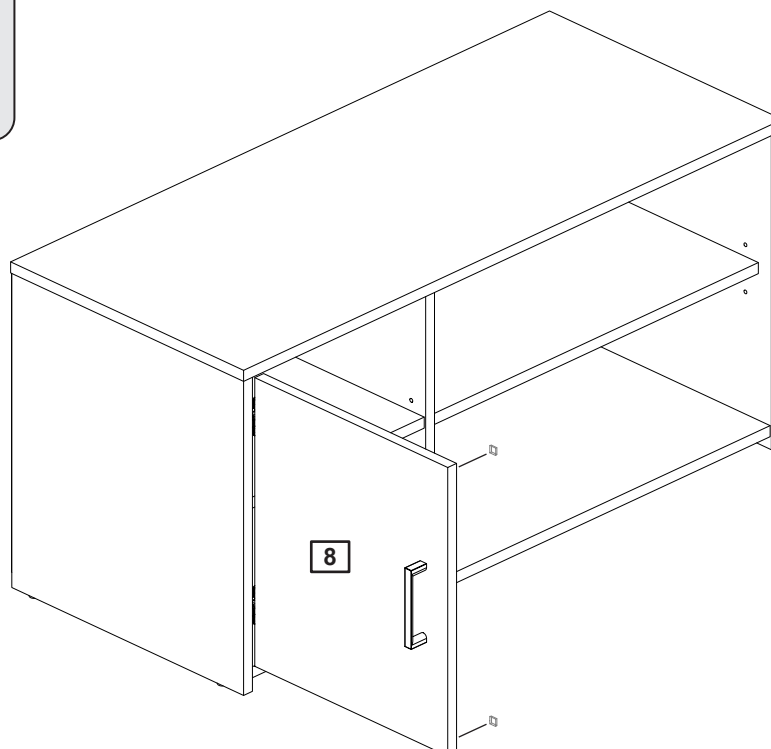
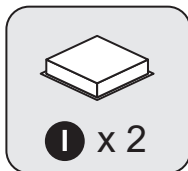
d: The Hinge must NOT be AT AN ANGLE to the Hinge Plate when assembled.
This would indicate that the recess at the bottom of screw B had not located in the slot in the Hinge Plate and the Hinge would not be secure.
Remove the Hinge from the Hinge Plate and then re-assemble being careful to follow instructions a-c.



26



27





Adjust the Doors if needed

a: Before adjusting the Doors, use a Spirit Level to check the Top (or Base) of the unit is level, front-to-back and side-to-side in the 3 positions shown. Use suitable packing pieces (not supplied) to make the unit level BEFORE making any adjustment to the Hinges, as shown.

b: Height adjustment.

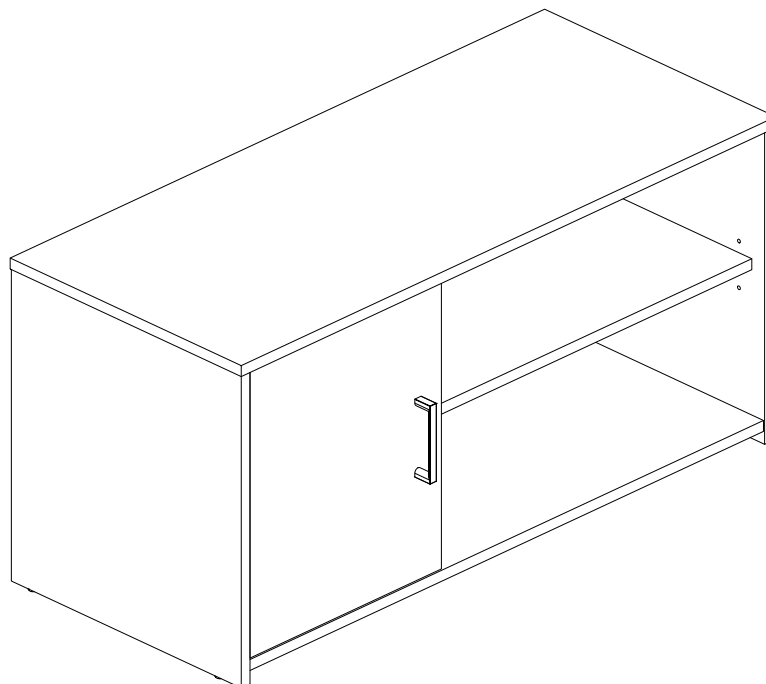
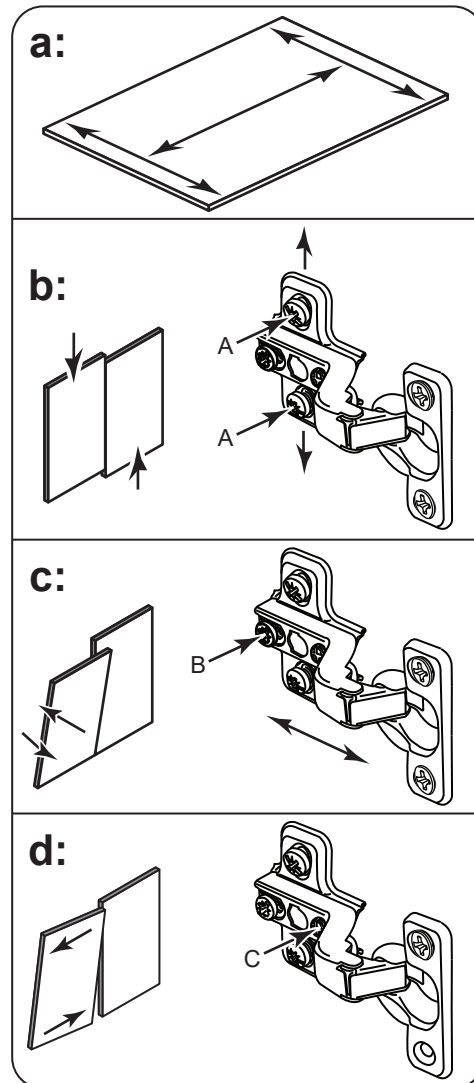
Loosen screws A on Hinge Plates and move Door up or down as required. Retighten screw A.

C: Forward and Back adjustment.

Loosen screw B on Hinge Plate and move Door in or out as required. Retighten screw B.

d: Sideways adjustment.

To move Door 'out' loosen screw C.
To move Door 'in' tighten screw C.



Assembly is complete